

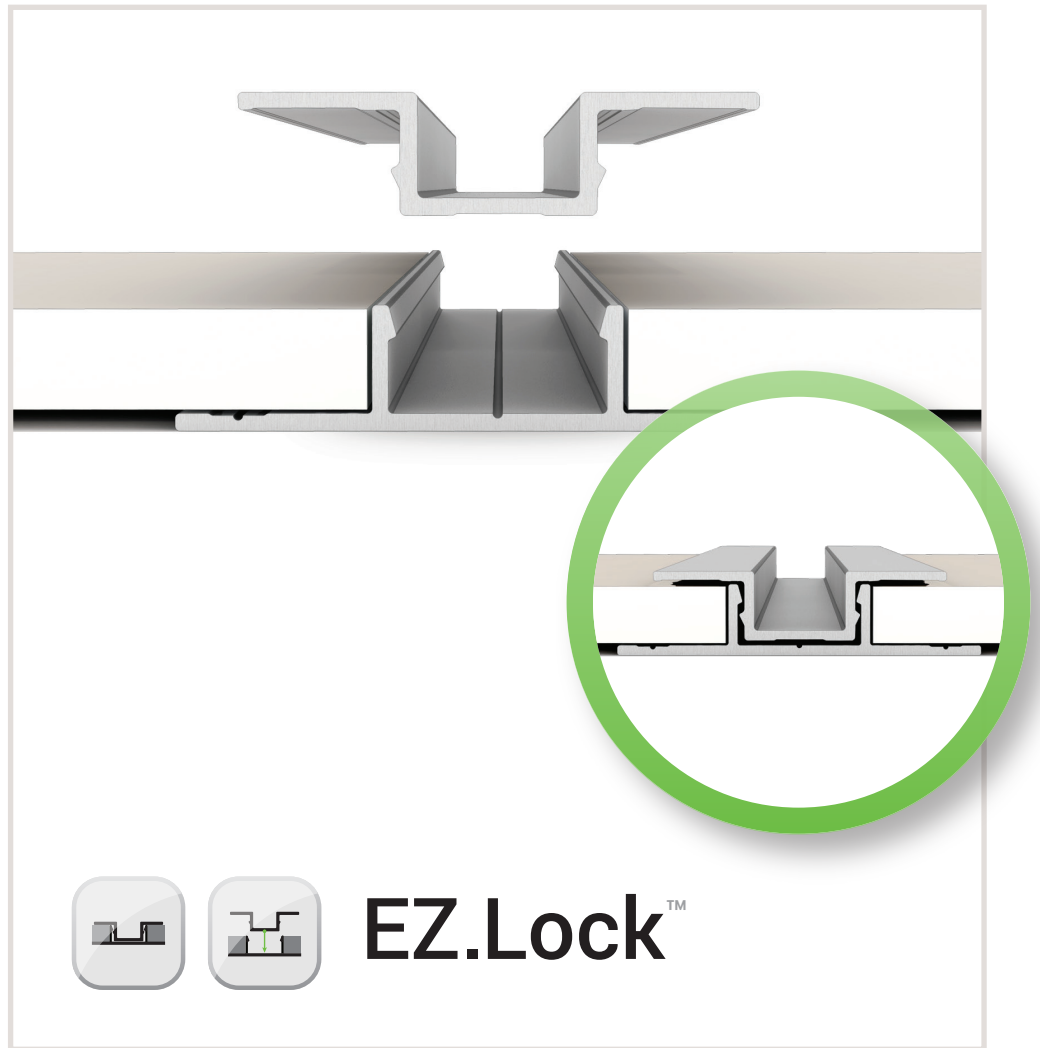
Fiber Cement Trim System

Profile Guide

5/16" Fiber Cement Panel System. Fiber Cement LAP Trim System. Fiber Cement Transition Series.

The Fiber Cement Trim System by EasyTrim Reveals consists of extruded aluminum trim profiles that work together to create one complete system. All EasyTrim Reveals trim profiles come in 10' lengths and are made from ultra-durable 6063-T5 aluminum. They are available in a number of finishes and colors including clear silver anodized, black anodized, primed for site painting, and any custom color through our ColorMatch™ program.

Modern. Affordable. Durable.



Efficient Installation + Protection.

Our high-efficiency 2-piece assemblies featuring **EZ.Lock™** Trim Technology ensure maximum fiber cement edge protection and significantly speed up the installation process by providing open, “tab-free” areas to quickly place the fiber cement on the wall.



Water-management + Fit & Finish.

Our multi-purpose **EZ.Bump™** not only provides revolutionary water-management to protect the building and fiber cement, it provides clean fit-&-finish allowing our horizontal trims to neatly slot into our vertical trims producing caulk-free terminations without any dangerous sharp edges.

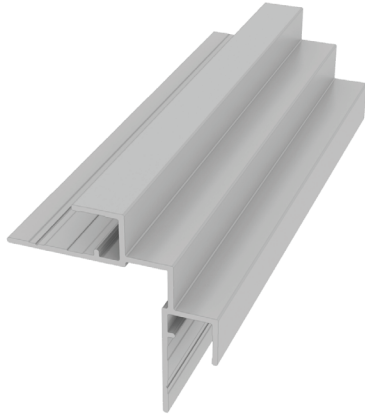
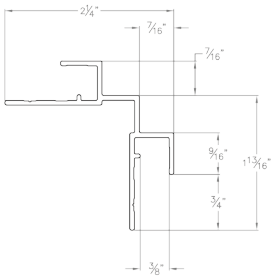


Water-management + Ease of Installation.

8° **EZ.Slope™** ledges on our horizontal trims shed dirt and water away from the wall allowing the fiber cement to sit directly on the ledge, producing cleaner looking and easier to install horizontal trim seams.

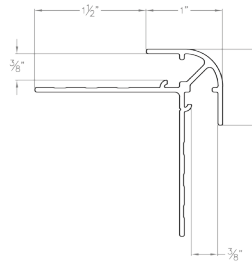
EZ.1 - 1-Piece Square Outside Corner Panel Trim

The EZ.1 has distinctive shadow lines from our $\frac{1}{2}$ " step design and our industry-leading $\frac{1}{2}$ " tabs. This profile also features the EZ.Bump™.



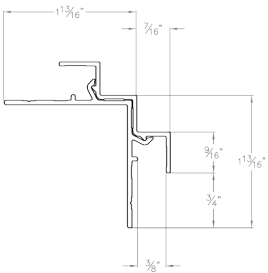
EZ.2 - Round Outside Corner Panel Trim

The EZ.2 gives a flowing look while providing increased durability in heavy traffic areas, deflecting carts and other components that may otherwise damage corners. This profile also features the EZ.Bump™.



EZ.12 - 2-Piece Square Outside Corner Panel Trim

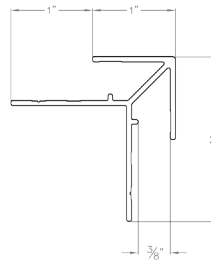
The EZ.12 features the 2-Piece EZ.Lock™ technology. An efficient alternative to the EZ.1, this profile provides the same installed look and also features the EZ.Bump™.



Note: Adhesive must be applied within the EZ.Lock™ Engagement Channel.

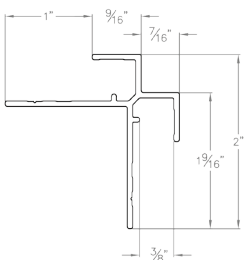
EZ.13 - Arrow Outside Corner Panel Trim

The EZ.13 is one of our sleekest corners available. Offering 1" tabs from the peak, this profile keeps a classic squared-off look to corners and columns while also featuring the EZ.Bump™.



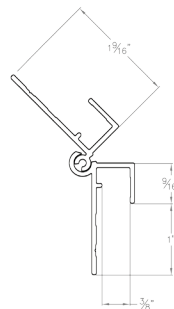
EZ.14 - X Outside Corner Panel Trim

The EZ.14 has a clear shadow line through the bold center indentation, with our industry-leading $\frac{1}{2}$ " tabs providing improved fiber cement edge protection. This profile also features the EZ.Bump™.



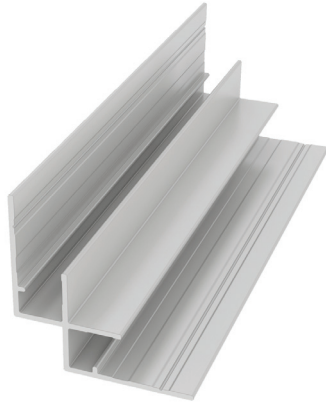
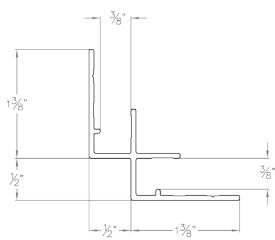
EZ.15 - Multi-Angle Outside Corner Panel Trim

The EZ.15 can be installed to trim any angle from 105° to 165°. This revolutionary trim replaces the inefficient installation of two adjusted J trims. This profile also features the EZ.Bump™.



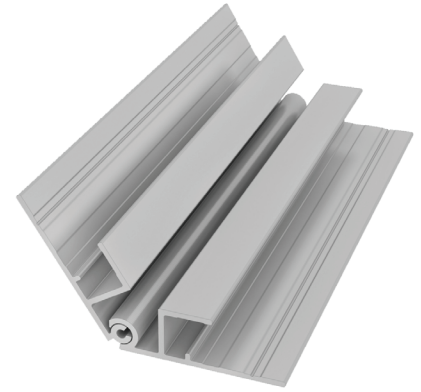
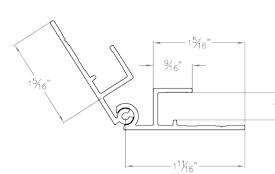
EZ.3 - Inside Corner Panel Trim

The EZ.3 provides durable fiber cement edge protection and a strong straight line through our signature $\frac{1}{2}$ " tabs. This profile also features the EZ.Bump™.



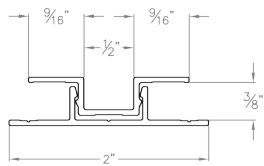
EZ.18 - Multi-Angle Inside Corner Panel Trim

The EZ.18 can be installed to trim any angle from 90° to 165°. This revolutionary trim replaces the inefficient installation of two adjusted J trims. This profile also features the EZ.Bump™.



EZ.7 - 2-Piece Vertical U Panel Trim

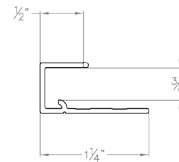
The EZ.7 features the 2-Piece EZ.Lock™ technology. This profile design has a $\frac{1}{2}$ " reveal on center and full $\frac{1}{2}$ " tab coverage to both sides protecting the fiber cement edges.



Note: Adhesive must be applied within the EZ.Lock™ Engagement Channel.

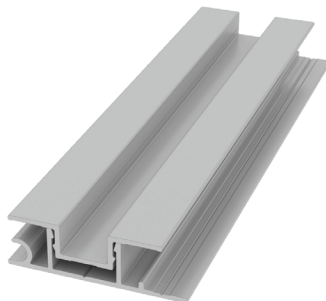
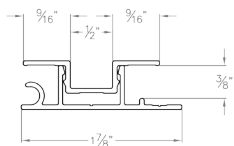
EZ.8 - Vertical Window Sill J Panel Trim

The EZ.8, equipped with a $\frac{1}{2}$ " tab is designed to cap the fiber cement around windows, doors, and for transitioning into other building materials. This profile also features the EZ.Bump™.



EZ.19 - 2-Piece Vertical Window Sill U Panel Trim

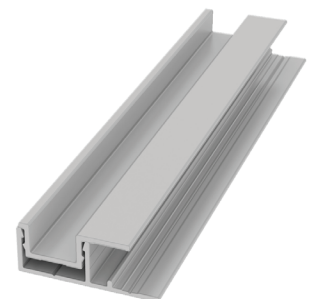
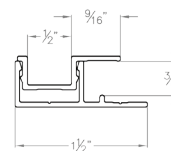
The EZ.19 features the 2-piece EZ.Lock™ technology. An efficient alternative to the EZ.8, featuring a $\frac{1}{2}$ " tab $\frac{1}{2}$ " reveal design. This profile also features a caulking channel and the EZ.Bump™.



Note: Adhesive must be applied within the EZ.Lock™ Engagement Channel.

EZ.20 - 2-Piece Vertical Termination F Panel Trim

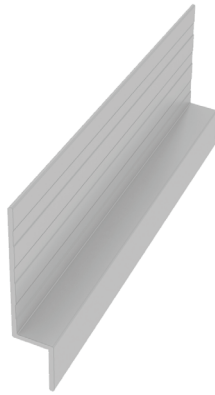
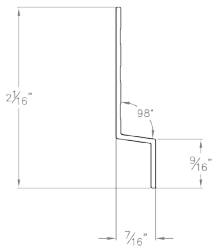
The EZ.20 features the 2-Piece EZ.Lock™ technology. An efficient alternative to the EZ.8 for building material transitions. This profile also features the EZ.Bump™.



Note: Adhesive must be applied within the EZ.Lock™ Engagement Channel.

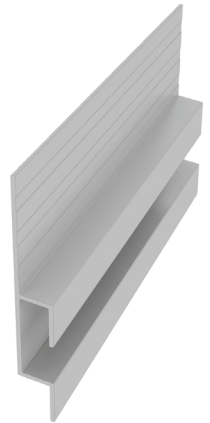
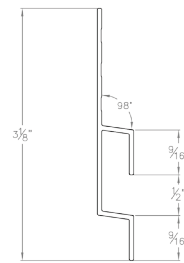
EZ.4 - Horizontal Z Panel Trim

The EZ.4 offers the most minimal look of horizontal trims available. This profile features a full ½" tab and the EZ.Slope™.



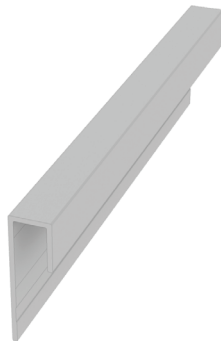
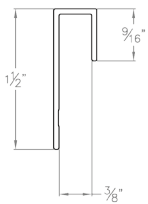
EZ.5 - Horizontal Reveal H Panel Trim

The EZ.5 design features a ½" reveal between panels providing symmetry when used with our EZ.7 - 2-Piece Vertical U Panel Trim. This profile features a full ½" tab and the EZ.Slope™.



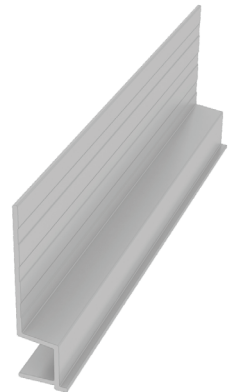
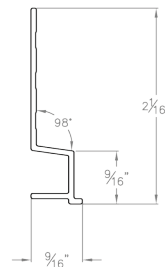
EZ.9 - Horizontal Soffit J Panel Trim

The EZ.9 is designed for capping the top of the panels in transition to a soffit area. This profile's smaller profile depth ensures a clean gap-free appearance when viewed from below.



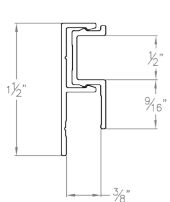
EZ.10 - Horizontal Base B Panel Trim

The EZ.10 is the perimeter starter strip, containing a base drip edge. Alternatively, this profile is used as a transition from soffit to fascia situations. This profile also features the EZ.Slope™.



EZ.21 - 2-Piece Soffit F Panel Trim

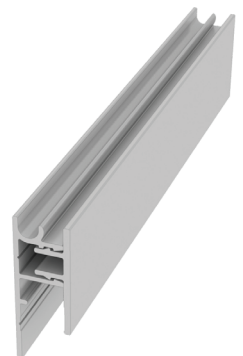
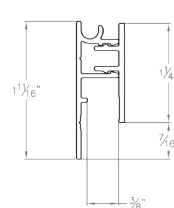
The EZ.21 features the 2-Piece EZ.Lock™ technology. This profile is designed for capping the top of the panels in transition to a soffit area. This profile also features a ½" reveal at the top.



Note: Adhesive must be applied within the EZ.Lock™ Engagement Channel.

EZ.26 - 2-Piece Window Sill J Panel Trim

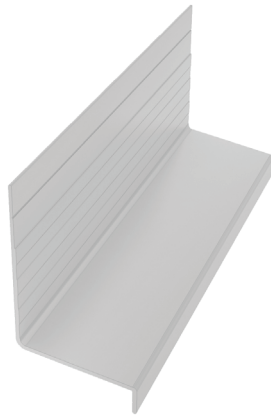
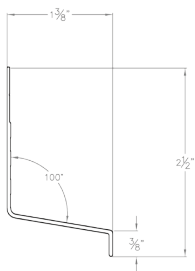
The EZ.26 features the 2-Piece EZ.Lock™ technology. This profile contains a caulking channel and is designed to run on the underside of window frames and is used in conjunction with the EZ.19.



Note: Adhesive must be applied within the EZ.Lock™ Engagement Channel.

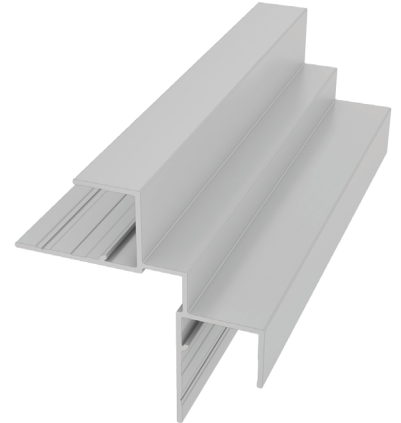
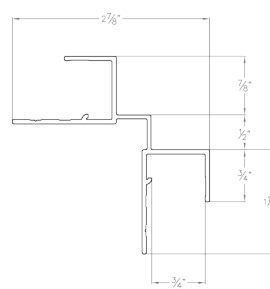
EZ.28 - 1-3/8" Window Drip Cap Flashing

The EZ.28 is a sturdy profile designed to extend over and provide maximum drainage for your windows, doors, and other horizontal terminations. This profile also features the EZ.Slope™.



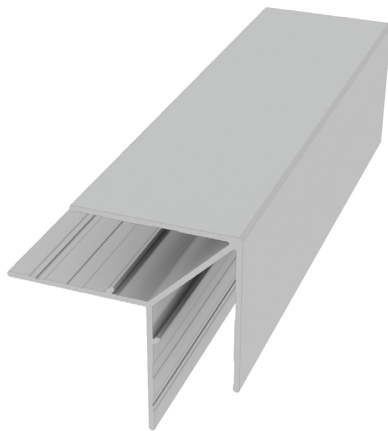
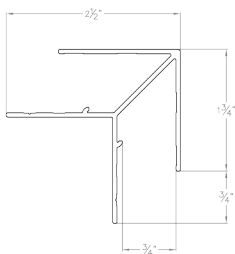
EZ.31 - 1-Piece Square Outside Corner LAP Trim

The EZ.31 has distinctive shadow lines for a modern look from our 3/4" step design and our industry-leading 3/4" tabs. This profile also features the EZ.Bump™.



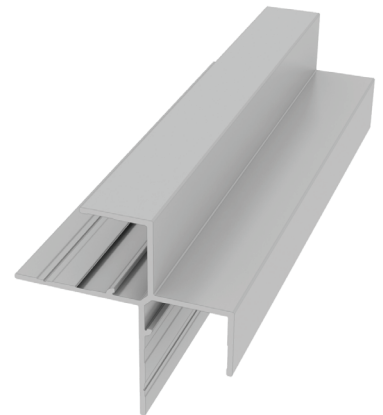
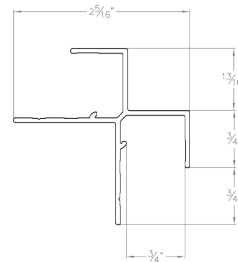
EZ.33 - Arrow Outside Corner LAP Trim

The EZ.33 provides a sleek traditional look. Offering 1-3/4" tabs from the peak, this profile keeps a classic squared-off look to corners and columns while also featuring the EZ.Bump™.



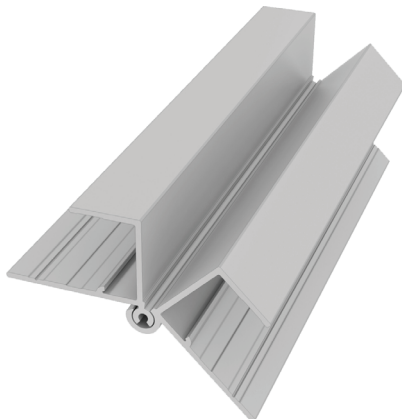
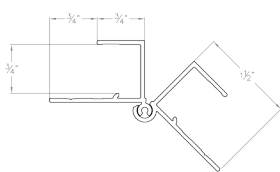
EZ.34 - X Outside Corner LAP Trim

The EZ.34 has a clear shadow line through the bold center indentation, with our industry-leading 3/4" tabs. This profile also features the EZ.Bump™.



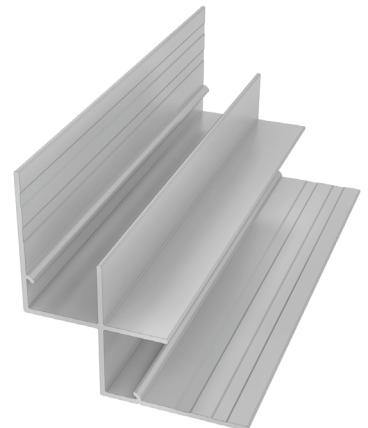
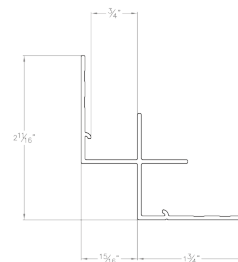
EZ.35 - Multi-Angle Outside Corner LAP Trim

The EZ.35 can be installed to trim any angle from 105° to 165°. This revolutionary trim replaces the inefficient installation of two adjusted J trims. This profile also features the EZ.Bump™.



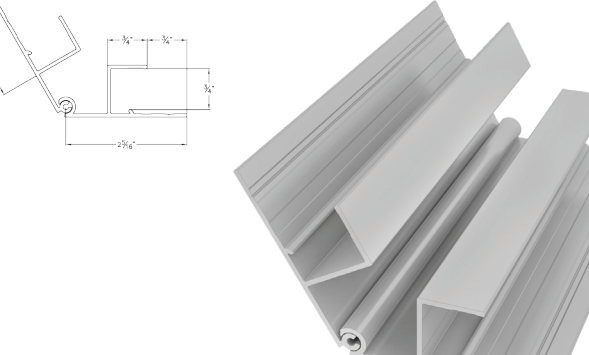
EZ.36 - Inside Corner LAP Trim

The EZ.36 provides durable fiber cement edge protection and a strong straight line through our connecting 3/4" tabs. This profile also features the EZ.Bump™.



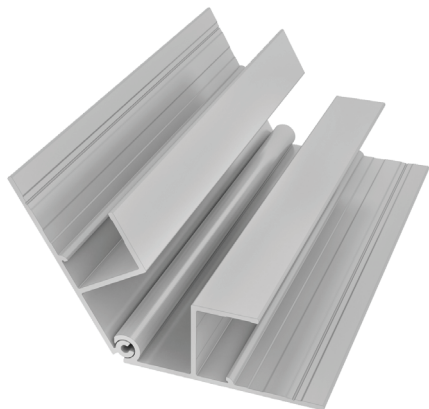
EZ.37 - Multi-Angle Inside Corner LAP Trim

The EZ.37 can be installed to trim any angle from 90° to 165°. This revolutionary trim replaces the inefficient installation of two adjusted J trims. This profile also features the EZ.Bump™.



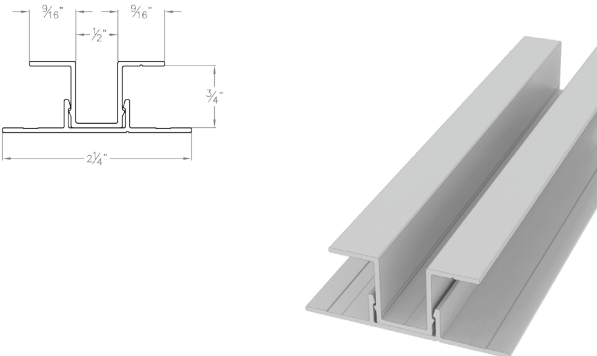
The technical drawing on the left shows the profile of the EZ.37 trim in a bent position. It includes dimensions: a height of 1 1/2", a width of 3/4", a depth of 3/4", a total width of 2 3/8", and a height of 3/4". The 3D perspective on the right shows the trim in a bent position, highlighting the EZ.Bump™ feature.

Technical drawing of a mechanical part with dimensions: $\frac{1}{2}$, $\frac{3}{4}$, $\frac{3}{4}$, $\frac{3}{4}$, $2\frac{3}{4}$.



EZ.38 - 2-Piece Vertical U LAP Trim

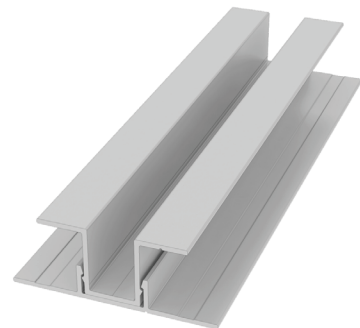
The EZ.38 features the 2-Piece EZ.Lock™ technology. The ½" tab ½" reveal design works as a modern board and batten system allowing cut or uncut edges of plank to be butted together.



The technical drawing on the left shows a cross-section of the EZ.38 trim. It consists of two pieces: a top piece and a bottom piece. The top piece has a total width of 2 1/4 inches. The bottom piece has a total width of 2 1/4 inches. The top piece has a central tab that is 1/2 inch wide and 3/16 inch high. The bottom piece has a central channel that is 1/2 inch wide and 3/4 inch deep. The tab of the top piece fits into the channel of the bottom piece. The 3D perspective on the right shows two pieces of the trim, one in front of the other, illustrating how they interlock.

Note: Adhesive must be applied within the EZ Lock™ Engagement Channel.

Technical drawing of a T-joint showing dimensions: $\frac{3}{16}$ " for the top flange width, $\frac{1}{2}$ " for the stem width, $\frac{3}{4}$ " for the stem height, and $2\frac{1}{4}$ " for the base plate width.



Note: Adhesive must be applied within the EZ.Lock™ Engagement Channel.

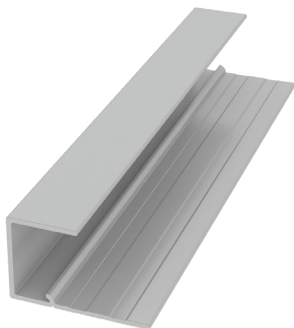
EZ.40 - Vertical Window Sill J LAP Trim

The EZ.40, equipped with a $\frac{3}{4}$ " tab is designed to cap the fiber cement around windows, doors, and for transitioning into other building materials. This profile also features the EZ.Bump™.



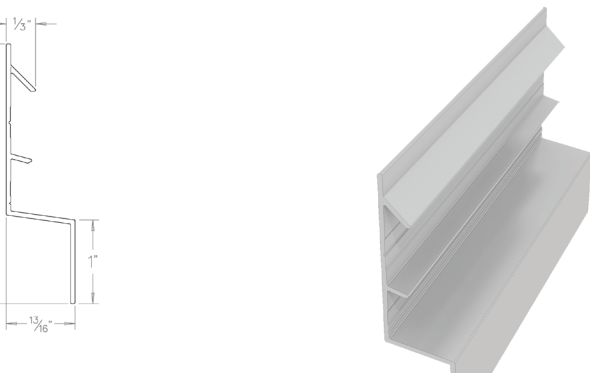
The image displays the EZ.40 Vertical Window Sill J LAP Trim in two views. On the left is a technical line drawing showing the profile's dimensions: a top flange width of $\frac{3}{4}$ " and a vertical height of $\frac{3}{4}$ ". The bottom flange has a total width of $1\frac{1}{2}$ " and includes a small, wavy EZ.Bump™ detail. On the right is a 3D perspective rendering of the trim, showing its L-shaped profile and the textured surface of the bottom flange.

Technical drawing of a stepped metal plate. The dimensions are: $\frac{3}{4}$ " for the top horizontal section, $1\frac{1}{2}$ " for the bottom horizontal section, and $\frac{3}{4}$ " for the vertical section.



EZ.48 - Horizontal Base Z LAP Trim

The EZ.48 provides the kickout required to begin LAP installation. A 1" tab hides the unsightly gaps exposed on most plank installations. This profile also features the EZ.Slope™, EZ.Kickout™, and EZ.Guard™.



The technical drawing on the left shows the profile of the EZ.48 trim. It is an L-shaped extrusion with a vertical leg and a horizontal leg. The vertical leg has a total height of 3 1/8 inches. The horizontal leg has a height of 1 inch. The horizontal leg is 13/16 inch wide. The vertical leg has a 1/8 inch wide tab at the top. The 3D perspective on the right shows the trim installed, demonstrating how the 1 inch tab hides the gaps between planks.

Technical drawing of a bent metal rod. The dimensions are: $\frac{1}{3}$ " for the top horizontal section, $3\frac{1}{8}$ " for the vertical section, 1 " for the bottom horizontal section, and $13\frac{1}{16}$ " for the total horizontal length.



EZ.60 - Perforated Vented LAP Starter Strip

The EZ.60 begins the first course of LAP plank installation and allows ventilation into the rainscreen cavity through its perforated design.

The image contains two views of the EZ.60 Perforated Vented LAP Starter Strip. On the left is a 2D cross-sectional view showing the L-shaped profile. The vertical leg has a height of $2\frac{1}{6}"$. The horizontal leg has a thickness of $\frac{1}{2}"$ and a width of $\frac{3}{4}"$. The corner is rounded with a radius of 98° . On the right is a 3D perspective view of the strip, showing its length and the series of circular perforations along the bottom flange.

EZ.16 - 2-Piece Outside Corner Transition Trim

The EZ.16 features the 2-Piece EZ.Lock™ technology. This profile has distinctive shadow lines through our step design and almost seamlessly transitions LAP and panel installation.

The technical drawing on the left shows the cross-section of the EZ.16 trim. It is a 2-piece assembly. The top piece has a total width of $2\frac{7}{16}"$, with a flange width of $1\frac{1}{2}"$ and a base width of $\frac{1}{2}"$. The bottom piece has a total width of $2\frac{7}{16}"$, with a flange width of $\frac{3}{8}"$ and a base width of $\frac{1}{2}"$. The height of the top piece is $\frac{3}{4}"$. The height of the bottom piece is $1\frac{1}{16}"$. The total height of the assembly is $2\frac{1}{16}"$. The 3D perspective view on the right shows the trim in a corner, highlighting the shadow lines and the step design.

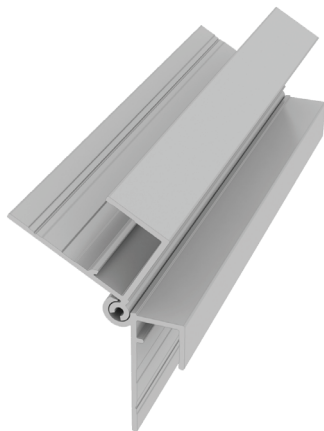
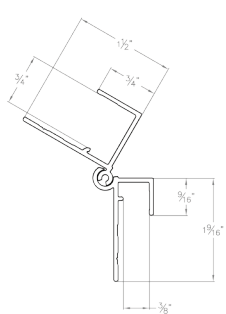
Note: Adhesive must be applied within the EZ Lock™ Engagement Channel.



Note: Adhesive must be applied within the EZ.Lock™ Engagement Channel.

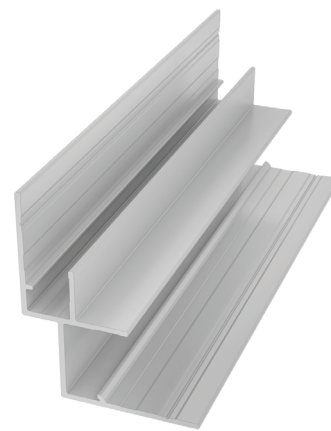
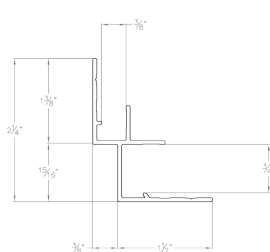
EZ.45 - Multi-Angle Outside Corner Transition Trim

The EZ.45 provides transition depth. It can trim any angle between 105° and 165°. This trim replaces the inefficient installation of two adjusted J trims. This profile also features the EZ.Bump™.



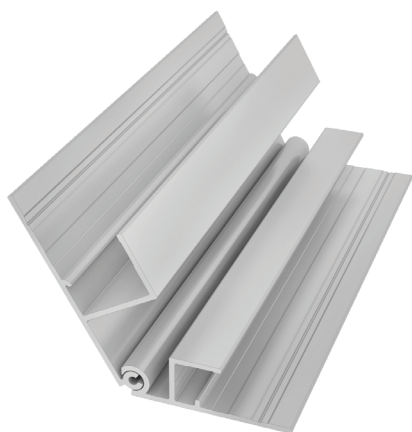
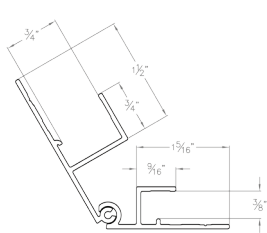
EZ.17 - Inside Corner Transition Trim

The EZ.17 provides durable fiber cement edge protection and a strong straight line up transitioning almost seamlessly between LAP and panel. This profile also features the EZ.Bump™.



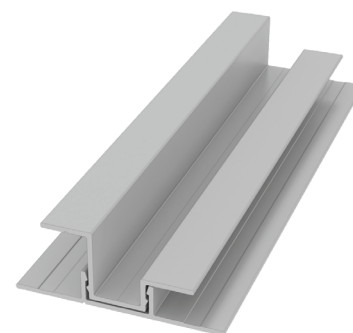
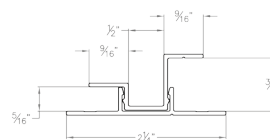
EZ.46 - Multi-Angle Inside Corner Transition Trim

The EZ.46 provides transition depth. It can trim any angle between 90° and 165°. This trim replaces the inefficient installation of two adjusted J trims. This profile also features the EZ.Bump™.

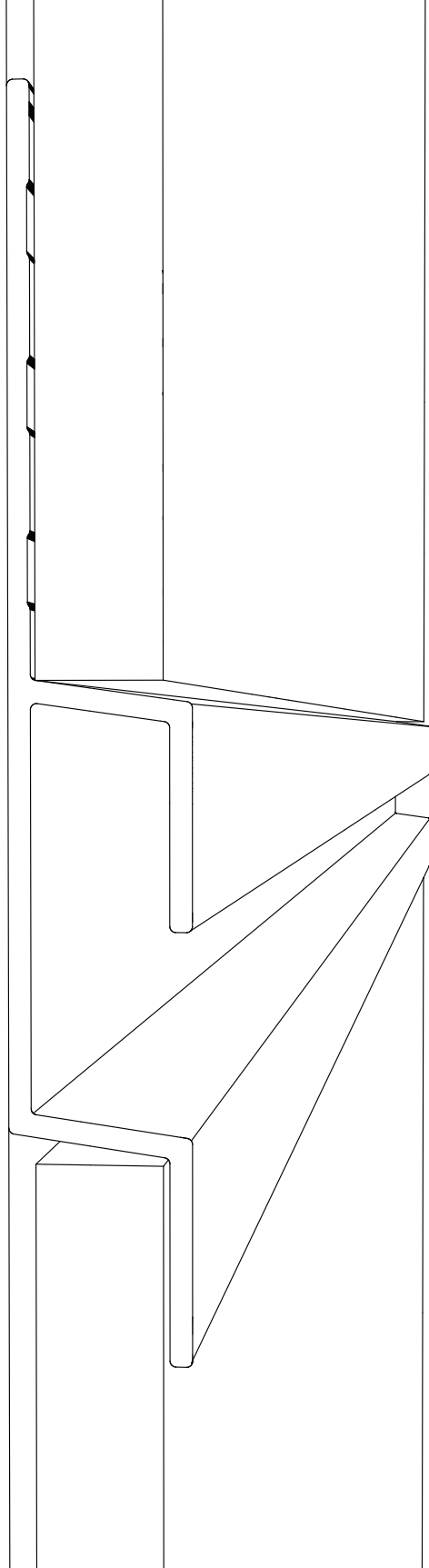


EZ.11 - 2-Piece Vertical U Transition Trim

The EZ.11 features the 2-Piece EZ.Lock™ technology. This trim provides an almost seamless transition between LAP and panels with its 1/2" tab 1/2" reveal design.



Note: Adhesive must be applied within the EZ.Lock™ Engagement Channel.



No Charge Sample Pack

Request a set of our fiber cement trim profiles for no charge shipped right to your door. Simply request a set online, through your local sales rep, or email samples@easytrimreveals.com and we'll ship you one right away.



EZ.Lock™

2-piece assemblies simplify installation by creating open, tab-free areas to quickly and securely place the siding on the wall.



EZ.Bump™

Caulk free installation. Creates superior fit-and-finish and an interior drainage plane flushing water away from the siding and walls.



EZ.Slope™

Safely set the siding right on the ledge. Horizontal trim with built-in 8° sloped ledges shed dirt and water away from the wall.



EZ.Line™

Ensure consistency and ease of installation through our alignment guides and screw set lines built into the backend of our trims.



Warranty

Our trims are made of ultra-durable 6063-T5 aluminum backed by a long-term 15-year performance warranty.



ColorMatch™

Unlimited custom colors. Or select from our standard finishes: clear anodized, black anodized, or primed.