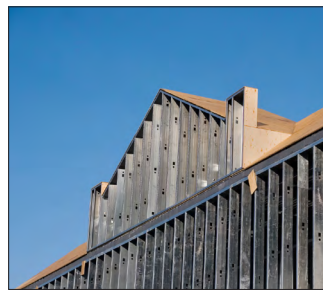
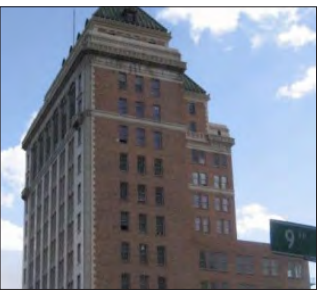


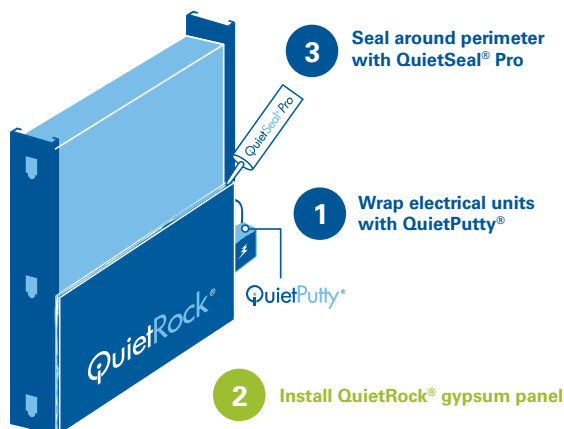
# QuietRock® 510



## The **LOWEST-COST SOLUTION** for Remodels & Commercial Applications

QuietRock 510 is an entry-level 1/2" thick panel that improves STC performance at an entry level price. QuietRock® 510 is ideal for new construction as well as remodeling and upgrades projects. QuietRock® 510 installs and finishes like standard drywall, requiring no special tools or training.

### The Quiet® Sound Damping System in 3 easy steps:



### QuietRock® 510 Benefits

- Great value, offering solid performance at the lowest cost on the market
- Delivers STC ratings of 47-52
- UL classified (for use in fire rated assemblies)
- Ideal for remodels and upgrades – installs over existing drywall, with no demolition<sup>1</sup>
- Continues to reduce noise even when fixtures are installed, such as shelves or lamps
- Only 1/2" thick
- Outperforms other sound damping methods, including soundboard and resilient channel
- Patented technology

<sup>1</sup> Not recommended for ceiling applications as a face layer

# QuietRock® 510



**1/2" low cost sound damping gypsum panel – ideal for installation in residential and remodeling applications. Installs similar to standard gypsum panels, no special tools required.**

## Product Specifications:

- Thickness:** 1/2" (12.7mm), tapered edges
- Width:** 4' (1220mm)
- Lengths:** 8' (2438mm), 9' (2743mm), 10' (3048mm), 12' (3658mm)
- Weight:** 2.13 lbs/sqft
- STC-rated Assemblies (per ASTM E 90):** 47-52
- Flame Spread (per ASTM E 84):** Class A
- Product Standards:** C 1766
- Installation Standards:** ASTM C 840; GA-214, GA-216

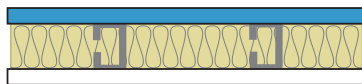
## UL Assembly:

QuietRock® 510 is approved for use as an additional layer on one or both sides of the U300, U400, V400 and W400 wall designs as the face layer or attached to the studs. QuietRock® 510 is approved for use as an additional layer in the L500 and M500 series floor/ceiling assemblies.<sup>1</sup> QuietRock® 510 panel not evaluated nor intended as a substitute for the required layer(s) of UL Classified Gypsum Board in the above listed designs.

## Common Wall Assemblies:

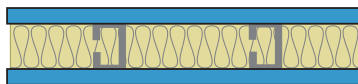
### Light Gauge Steel Stud Walls

Single 3 5/8" Steel Stud Wall, 24" OC - **STC 51\***



QuietRock® on one side  
Type X on the other

Single 3 5/8" Steel Stud Wall, 24" OC - **STC 55\***



QuietRock® on both sides

Visit [www.QuietRock.com](http://www.QuietRock.com) for additional assembly and technical information

### Heavy Gauge Steel Stud Walls

3-5/8" Single Steel Stud Wall, 16" OC - **STC 45\***



QuietRock® on one side  
Type X on the other

6" Single Steel Stud Wall, 16" OC - **STC 45\***



QuietRock® on one side  
Type X on the other

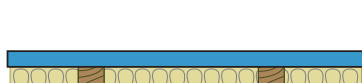
6" Single Steel Stud Wall, 16" OC - **STC 49\***



QuietRock® on both sides

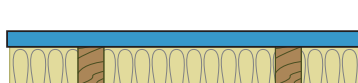
### Wood Stud Walls

Single 2x4 wood studs, 24" OC - **STC 49**



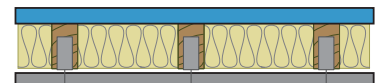
QuietRock® on one side,  
Type X on the other

Staggered 2x4 wood studs, 8" OC - **STC 54\***



QuietRock® on one side  
Type X on the other

Double 2x4 wood studs, 16" OC - **STC 69**



QuietRock® on both outer walls  
1" fire-shield shaft liner material both sides

\* Estimated STC based on independent laboratory testing

<sup>1</sup> For use as a base layer in multi-layer ceiling applications only

The information contained in this document is for general purposes only. Features and specifications are subject to change. The diagrams and stated STC ratings are intended to serve as a guide. Construction practices have an influence on final STC ratings. PABCO® Gypsum cannot guarantee actual STC ratings. Flanking sound patterns, the integrity of the wall, and construction methods factor in effective sound control. Exposure to excessive or continuous moisture and extreme temperatures of 125°F (52°C) or more should be avoided. QuietRock® panels should be stored flat in a dry area, under cover, on supported risers to prevent damage to product. Proper care should be taken while transporting, storing, applying and maintaining QuietRock® panels.



PABCO® Gypsum | 37851 Cherry Street, Newark, CA 94560 | 1.800.797.8159 | [www.PabcoGypsum.com](http://www.PabcoGypsum.com) | [www.QuietRock.com](http://www.QuietRock.com) | PN: 101-00017-030514  
 © 2014 PABCO® Gypsum. All rights reserved. PABCO® Gypsum, the PABCO® logo, EZ-SNAP™, Quiet®, QuietRock®, QuietPutty®, QuietSeal® Pro, QuietSeam®, QuietGlue® Pro, and QuietCoat® are trademarks or registered trademarks of Pacific Coast Building Products, Inc. and licensed to PABCO® Gypsum in the United States and other countries. Information subject to change without notice. QuietRock® 510 is covered by U.S. patent number 7,799,410 and 7,883,763.