

Trex Railing / Outdoor Lighting
Technical Guide
Revision 02.24.14

Introducing the Trex® Railing Lineup

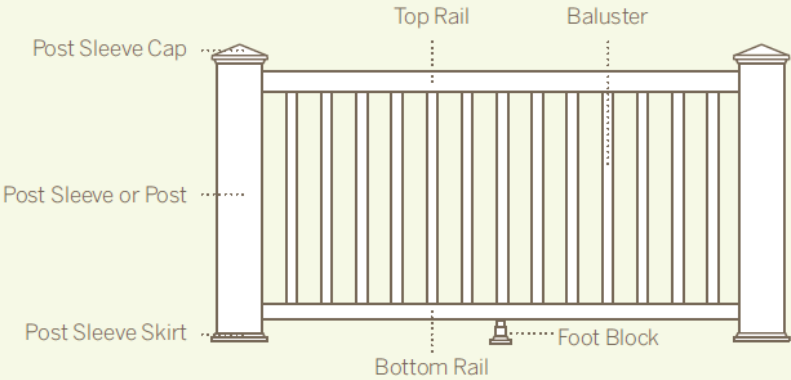
Compare design options, performance and more



	BEST	BETTER	GOOD
	Trex Transcend® RAILING	Trex Reveal™ ALUMINUM RAILING	Trex Select® RAILING
Material	High-performance composite with a fade-resistant shell	Aluminum	High-performance composite
Color choices	7	3	1
Top and bottom rail styles	3	1	1
Baluster options	3 plus glass panels	2	1
Hidden bracket system	✓		
25-Year Limited Residential Warranty*	✓	✓	✓
Coordinates with Trex® DeckLighting™	✓	✓ if used with Trex post sleeves	✓
Easy soap & water cleaning	✓	✓	✓
Compatible with all Trex decking lines	✓	✓	✓

Railing—a lot easier than it looks




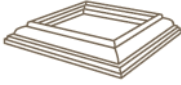
Each section of Trex® railing is comprised of the pieces shown below. On the following pages, we designate these components with a numbered process (3-step or 5-step) for easy tracking as you plan.



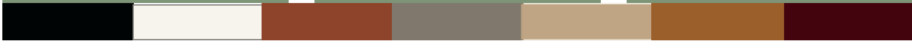
- TREX® POST COMPONENTS
- TRANSCEND® RAILING
- REVEAL™ RAILING
- TREX SELECT® RAILING

Trex Component Options

Trex post sleeves, post sleeve caps and post sleeve skirts are the starting points of our railing lines. They are available in the seven Transcend® railing colors.

<p>1 POST SLEEVE</p> 	<p>2a POST SLEEVE CAP</p> <p>Flat</p>  <p>Pyramid</p>  <p>Available with or without Deck Lighting™</p>	<p>2b POST SLEEVE SKIRT</p> 
---	---	--


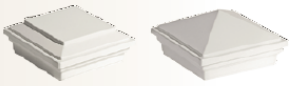

AVAILABLE COLORS



Components that can be shared across ALL Trex Railing Lines

Trex Post Sleeves, Caps & Skirts

● These components can be used as steps 1 & 2 for all Trex railing lines.

STEP	COMPONENT	DESCRIPTION	ITEM NUMBER
1	 <p>Post Sleeve</p> <p>Each 4x4 and 6x6 post sleeve fits over a 4x4 pressure treated post or equivalent post mount.</p>	4" x 4" x 39" Post Sleeve <i>[4.45" x 4.45" x 40" (113 mm x 113 mm x 1016 mm) external dimensions]</i>	XX040439APS
		4" x 4" x 108" Post Sleeve <i>[4.45" x 4.45" x 108" (113 mm x 113 mm x 2743 mm) external dimensions]</i>	XX0404108APS
		6" x 6" x 39" Post Sleeve <i>[5.5" x 5.5" x 39" (140 mm x 140 mm x 991 mm) external dimensions]</i>	WT060639APS
		6" x 6" x 108" Post Sleeve <i>[5.5" x 5.5" x 108" (140 mm x 140 mm x 2743 mm) external dimensions]</i>	WT0606108APS
2a	 <p>Post Sleeve Cap</p> <p>Also available with LED lighting. See page 39.</p>	Flat 4" x 4" Post Sleeve Cap (12/box) Pyramid 4" x 4" Post Sleeve Cap (12/box) <i>[4.55" x 4.55" (114 mm x 114 mm) internal dimensions]</i>	XXSQCAP4X4 XXPYCAP4X4
		Flat 6" x 6" Post Sleeve Cap (12/box) Pyramid 6" x 6" Post Sleeve Cap (12/box) <i>[5.6" x 5.6" (141 mm x 141 mm) internal dimensions]</i>	WTSQCAP6X6 WTPYCAP6X6
2b	 <p>Post Sleeve Skirt</p>	4" x 4" Post Sleeve Skirt (12/box) <i>[4.55" x 4.55" (114 mm x 114 mm) internal dimensions]</i>	XXSKIRT4X4
		6" x 6" Post Sleeve Skirt (12/box) <i>[5.6" x 5.6" (141 mm x 141 mm) internal dimensions]</i>	WTSKIRT6X6
ACCESSORY	Post Mount	Post Surface Mount for 36" (914 mm) Rail Height (1/box) Post Surface Mount for 42" (1067 mm) Rail Height (1/box) Post Surface Mount Hardware—Concrete (10 kits/box) Post Surface Mount Hardware—Wood (10 kits/box)	POSTMOUNT36 POSTMOUNT42 POSTHDCONC POSTHDCWOOD

ACCESSORY	Foot Block	Adjustable Foot Blocks (50/box)—White Adjustable Foot Blocks (50/box)—Colored	RWFTBLK XXFTBLK
-----------	------------	--	--------------------

XX = COLOR PREFIX:

WT Classic White	FP Fire Pit	RS Rope Swing	VL Vintage Lantern
BK Charcoal Black	GP Gravel Path	TH Tree House	

AVAILABLE COLORS



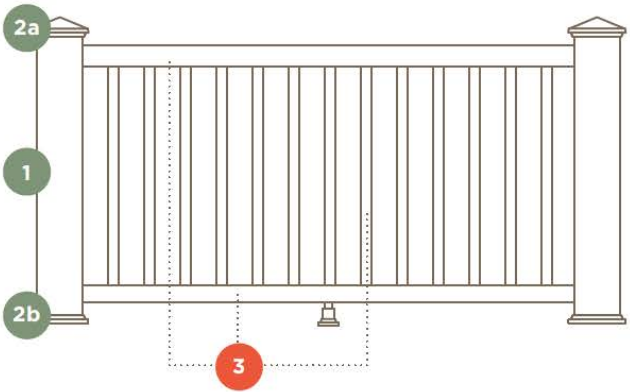



TrexSelect®
RAILING

GOOD

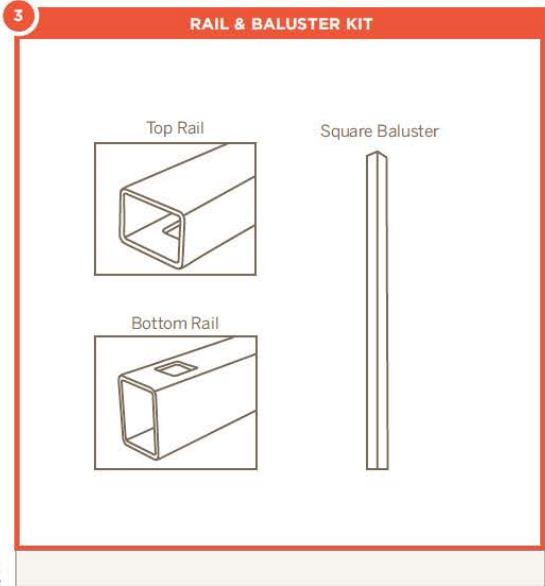
Streamlined and simple

Singular top and bottom rail shapes and square balusters keep things tidy, and the Classic White color works with any deck design.



Here's how:
TrexSelect® is a 3-step process. Choose Trex® post sleeves, caps and skirts (steps 1 & 2) and pair with a Select rail & baluster kit (step 3).

Select Component Options



AVAILABLE COLOR

Trex® Select™ Railing

● Select is a 3-step process. Choose Trex® post sleeves, caps and skirts (steps 1 & 2) and a rail & baluster kit (step 3).

STEP	COMPONENT	DESCRIPTION	ITEM NUMBER	
3	Rail & Baluster Kit » Top Rail » Bottom Rail » Square Balusters » Adjustable Foot Block » Hardware Pack Available in Classic White only.		6' x 36" Rail & Baluster Kit—Horizontal 6' x 36" Rail & Baluster Kit—Stair	WT0636HSELK WT0636SSELK
			8' x 36" Rail & Baluster Kit—Horizontal 8' x 36" Rail & Baluster Kit—Stair [6' Rail: 67.5" (1715 mm) actual length; 8' Rail: 91.5" (2324 mm) actual length]	WT0836HSELK WT0836SSELK
ACCESSORY	Select Accessories	Mounting Hardware for Cut Rails—Horizontal (10 kits/box) Mounting Hardware for Cut Rails—Stair (10 kits/box) 45 Degree Adapter Kit (10 kits/box)	WTHSEL CUT WTSSSEL CUT WTSEL45ADP	
ACCESSORY	Bulk Packs		6' Top Rail—Horizontal (10/box) 6' Top Rail—Stair (10/box) 8' Top Rail—Horizontal (10/box) 8' Top Rail—Stair (10/box) 6' Bottom Rail—Horizontal (10/box) 6' Bottom Rail—Stair (10/box) 8' Bottom Rail—Horizontal (10/box) 8' Bottom Rail—Stair (10/box) [6' Rail: 67.5" (1715 mm) actual length; 8' Rail: 91.5" (2324 mm) actual length]	WTSELHTR06 WTSELSTR06 WTSELHTR08 WTSELSTR08 WTSELHBR06 WTSELSBR06 WTSELHBR08 WTSELSBR08
		Square Balusters For 36" Rail Height (16/pack) [1.125" x 1.125" x 32" (29 mm x 29 mm x 813 mm) actual dimensions]	WT121230SELBK	
		Square Balusters For 42" Rail Height (16/pack) [1.125" x 1.125" x 38" (29 mm x 29 mm x 965 mm) actual dimensions]	WT121236SELBK	



Trex Part #: WT0636HSELK / WT0836HSELK

Description: 6ft / 8ft x 36" Rail Kit with Square Balusters - Horizontal



Bill of Materials

- Qty (1) Horizontal Top Rail
- Qty (1) Horizontal Bottom Rail
- Qty (13) 1.125" Square Balusters (**for 6ft Kit**)
- Qty (18) 1.125" Square Balusters (**for 8ft Kit**)
- Qty (4) Horizontal Brackets
- Qty (4) Horizontal Bracket Cover sets
- Qty (16) Bracket to Post fasteners
- Qty (16) Bracket to Rail fasteners
- Qty (1) Adjustable Footblock



Trex Part #: WT0636SSELK / WT0836SSELK

Description: 6ft / 8ft x 36" Rail Kit with Square Balusters - Stair



Bill of Materials

- Qty (1) Stair Top Rail
- Qty (1) Stair Bottom Rail
- Qty (11) 1.125" Square Balusters (**for 6ft Kit**)
- Qty (15) 1.125" Square Balusters (**for 8ft Kit**)
- Qty (2) Stair Top Rail Brackets
- Qty (2) Stair Bottom Rail Brackets
- Qty (2) Stair Top Rail Bracket Cover sets
- Qty (2) Stair Bottom Rail Bracket Cover sets
- Qty (16) Bracket to Post fasteners
- Qty (16) Bracket to Rail fasteners
- Qty (1) Adjustable Footblock



Trex Part #: WTHSELCUT

Description: Mounting Hardware for Cut Rails- Horizontal

UOM: Bag of 1

Purpose: Supplementary brackets for cut rail sections.



Bill of Materials

- Qty (4) Horizontal Brackets
- Qty (4) Horizontal Bracket Cover sets
- Qty (16) Bracket to Post fasteners
- Qty (16) Bracket to Rail fasteners



Trex Part #: WTSSELCUT

Description: Mounting Hardware for Cut Rails- Stair

UOM: Bag of 1

Purpose: Supplementary brackets for cut rail sections.



Bill of Materials

- Qty (2) Stair Top Rail Brackets
- Qty (2) Stair Bottom Rail Brackets
- Qty (2) Stair Top Rail Bracket Cover sets
- Qty (2) Stair Bottom Rail Bracket Cover sets
- Qty (16) Bracket to Post fasteners
- Qty (16) Bracket to Rail fasteners



Trex Part #: WTSEL45ADP

Description: 45 Degree Bracket Adapter – Horizontal Only

UOM: Bag of 1

Purpose: Adapter for angled horizontal applications.



Bill of Materials

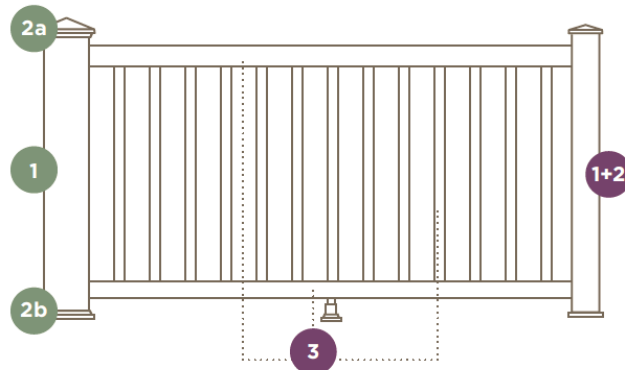
Qty (2) 45 Degree Adapters

Qty (8) Bracket to Post fasteners



**Minimalist style,
maximum strength**

Aluminum's superior strength enables the minimalist design of Trex® Reveal™, perfected by a choice of three neutral colors.



Here's how:



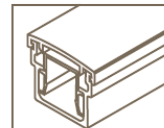


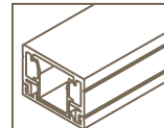
Trex Reveal is a 3-step process. Choose Reveal aluminum posts (which include a cap* & skirt) for steps 1 & 2, and pair with a rail & baluster kit (step 3).

OR

Choose Trex® composite post sleeves, caps and skirts for steps 1 & 2, and pair with a Reveal rail & baluster kit (step 3).

* Crossover posts (pictured below) do not include a post cap.


Reveal Component Options

1+2 ALUMINUM POSTS	3 RAIL & BALUSTER KITS		
<div style="display: flex; justify-content: space-around;"> <div style="text-align: center;"> <p>Crossover</p>  <p>The top rail is installed on top of crossover posts to create a continuous graspable handrail.</p> </div> <div style="text-align: center;"> <p>Traditional</p>  <p>The top rail is installed between traditional posts, which include an attached post cap.</p> </div> </div>	<p>Top Rail</p> 	<p>Round Baluster</p> 	<p>Square Baluster</p> 
<p>Bottom Rail</p> 			

AVAILABLE COLORS

Trex Reveal® Aluminum Railing

- Choose either Reveal posts or Trex® post sleeves, caps and skirts for steps 1 & 2. Pair with a rail & baluster kit (step 3).

STEP	COMPONENT	DESCRIPTION	ITEM NUMBER	
1+2	Aluminum Post with Cap & Skirt Aluminum Crossover Post Reveal aluminum posts fulfill steps 1 & 2. If using Trex post sleeves, refer to page 35. Aluminum posts can only be used with the Trex Reveal line.	2" x 2" x 37" Post w. Cap & Skirt—Horizontal <i>[2" x 2" x 37" (51 mm x 51 mm x 940 mm) actual dimensions]</i>	XXAL020237AP	
		2" x 2" x 43" Post w. Cap & Skirt—Horizontal <i>[2" x 2" x 43" (51 mm x 51 mm x 1092 mm) actual dimensions]</i>	XXAL020243AP	
		2" x 2" x 53" Post w. Cap & Skirt—Stair (cut-to-length) <i>[2" x 2" x 53" (51 mm x 51 mm x 1346 mm) actual dimensions]</i>	XXAL020253AP	
		2" x 2" x 36" Crossover Post—Horizontal (includes crossover bracket) <i>[2" x 2" x 36" (51 mm x 51 mm x 914 mm) actual dimensions]</i>	XXAL020236CP	
		2" x 2" x 42" Crossover Post—Horizontal (includes crossover bracket) <i>[2" x 2" x 42" (51 mm x 51 mm x 1067 mm) actual dimensions]</i>	XXAL020242CP	
		2.5" x 2.5" x 37" Post w. Cap & Skirt - Horizontal (IRC Compliant) <i>[2.5" x 2.5" x 37" (64 mm x 64 mm x 940 mm) actual dimensions]</i>	XXAL252537RCAP	
		2.5" x 2.5" x 43" Post w. Cap & Skirt - Horizontal (IRC Compliant) <i>[2.5" x 2.5" x 43" (64 mm x 64 mm x 1092 mm) actual dimensions]</i>	XXAL252543RCAP	
		2.5" x 2.5" x 53" Post w. Cap & Skirt - Stair (IRC Compliant) <i>[2.5" x 2.5" x 53" (64 mm x 64 mm x 1346 mm) actual dimensions]</i>	XXAL252553RCAP	
				
		3	Rail & Baluster Kit » Top Rail » Bottom Rail » Balusters » Mounting & Support Hardware	6' x 36" Rail Kit w. Square Balusters—Horizontal
6' x 36" Rail Kit w. Square Balusters—Stair	XXAS0636SRK			
8' x 36" Rail Kit w. Square Balusters—Horizontal	XXAS0836HRK			
8' x 36" Rail Kit w. Square Balusters—Stair	XXAS0836SRK			
6' x 42" Rail Kit w. Square Balusters—Horizontal	XXAS0642HRK			
6' x 42" Rail Kit w. Square Balusters—Stair	XXAS0642SRK			
8' x 42" Rail Kit w. Square Balusters—Horizontal	XXAS0842HRK			
8' x 42" Rail Kit w. Square Balusters—Stair	XXAS0842SRK			
6' x 36" Rail Kit w. Round Balusters—Horizontal	XXAR0636HRK			
6' x 36" Rail Kit w. Round Balusters—Stair	XXAR0636SRK			
8' x 36" Rail Kit w. Round Balusters—Horizontal	XXAR0836HRK			
8' x 36" Rail Kit w. Round Balusters—Stair	XXAR0836SRK			
6' x 42" Rail Kit w. Round Balusters—Horizontal	XXAR0642HRK			
6' x 42" Rail Kit w. Round Balusters—Stair	XXAR0642SRK			
8' x 42" Rail Kit w. Round Balusters—Horizontal	XXAR0842HRK			
8' x 42" Rail Kit w. Round Balusters—Stair	XXAR0842SRK			
				
Dimensions above are actuals. See below for metrics. <i>[6' x 36": 72" x 36" (1829 mm x 914 mm) actual dimensions]</i> <i>[8' x 36": 96" x 36" (2438 mm x 914 mm) actual dimensions]</i> <i>[6' x 42": 72" x 42" (1829 mm x 1067 mm) actual dimensions]</i> <i>[8' x 42": 96" x 42" (2438 mm x 1067 mm) actual dimensions]</i>				
ACCESSORY	Reveal Accessories	Fixed Bracket—Horizontal (4/pack)	XXFHBKTAL	
		Fixed Bracket—Stair (4/pack)	XXFSBKTAL	
		Swivel Bracket—Horizontal (2/pack—1 top, 1 bottom)	XXSWHBKTAL	
		Swivel Bracket—Stair (2/pack—1 top, 1 bottom)	XXSWSBKTAL	
		Crossover Bracket—Horizontal (1/pack)	XXFHCBKTAL	
		Swivel Crossover Bracket—Stair (1/pack)	XXSWSCBKTAL	
		Compound Swivel Bracket (2/pack—1 top, 1 bottom)	XXCPDSWBKTAL	
		Aluminum Footblock	XXALFTBLK	

XX = COLOR PREFIX:

BK Charcoal Black

BZ Bronze

WT Classic White

Aluminum railing has a textured finish.



Trex Part #: xxAL020237AP / xxAL020243AP / xxAL020253AP

Description: 2" x 2" x 37"/ 43"/ 53" Aluminum Post with Cap and Skirt

Purpose: Unlisted Post for ground level or applications at < 30" from grade



Bill of Materials

Qty (1) 2" x 2" Aluminum Surface Mount Post

Qty (1) Post Cap

Qty (1) 2pc Post Skirt

Qty (2) Post shims



Trex Part #: xxAL020236CP / xxAL020242CP

Description: 2" x 2" x 36"/ 42" Aluminum Crossover Post with Skirt

Purpose: Unlisted Post for ground level or applications at < 30" from grade



Bill of Materials

- Qty (1) 2" x 2" Aluminum Surface Mount Post
- Qty (1) Crossover Bracket & Cover (preinstalled)
- Qty (1) 2pc Post Skirt
- Qty (2) Post shims



Trex Part #: xxAL252537RCAP / xxAL252543RCAP / xxAL252553RCAP

Description: 2.5" x 2.5" x 37"/ 43"/ 53" Aluminum Post with Cap and Skirt

Purpose: IRC Compliant Post for residential applications of 3 stories or less.



Bill of Materials

Qty (1) 2.5" x 2.5" Aluminum Surface Mount Post

Qty (1) Post Cap

Qty (1) 2pc Post Skirt

Qty (2) Post shims



Trex Part #: POSTHWDECK

COMING SOON!

Description: Surface Mount Post Attachment Hardware for Wood Substructure

Purpose: Surface Mount Hardware necessary to achieve compliant post attachment

Bill of Materials

Qty (1) X" x X" Aluminum Backer Plate

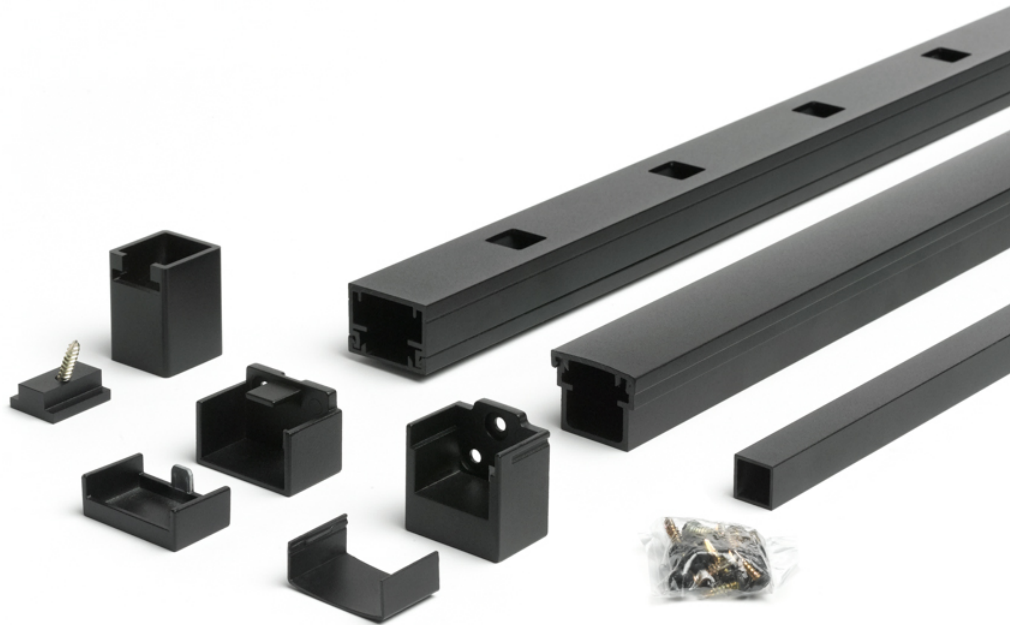
Qty (4) X" x X" SS Carriage Bolts

Qty (4) X" SS Washers



Trex Part #: xxAS0636HRK / xxAS0836HRK / xxAR0636HRK / xxAR0836HRK
xxAS0642HRK / xxAS0842HRK / xxAR0642HRK / xxAR0842HRK

Description: 6ft / 8ft x 36”/ 42” Rail Kit with Square / Round Balusters - Horizontal



Bill of Materials

- Qty (1) Top Rail and Top Rail Cover
- Qty (1) Bottom Rail and Bottom Rail Cover
- Qty (1) Square / Round “Fixed” Baluster with Fasteners
- Qty (15) 3/4” Square / Round Baluster (**6ft Kit**) including fixed baluster
- Qty (20) 3/4” Square / Round Baluster (**8ft Kit**) including fixed baluster
- Qty (2) Fixed Top Rail Bracket and Cover - Horizontal
- Qty (2) Fixed Bottom Rail Bracket and Cover - Horizontal
- Qty (1) Fastener Pack
(Screws for attachment to AL Posts & Screws for attachment to Composite Post)
- Qty (1) Al Footblock (**8ft Kit ONLY**)



Trex Part #: xxAS0636SRK / xxAS0836SRK / xxAR0636SRK / xxAR0836SRK
xxAS0642SRK / xxAS0842SRK / xxAR0642SRK / xxAR0842SRK

Description: 6ft / 8ft x 36"/ 42" Rail Kit with Square / Round Balusters - Stair



Bill of Materials

- Qty (1) Top Rail and Top Rail Cover
- Qty (1) Bottom Rail and Bottom Rail Cover
- Qty (13) 3/4" Square / Round Baluster (**6ft Kit**)
- Qty (17) 3/4" Square / Round Baluster (**8ft Kit**)
- Qty (1) Fixed Top Rail Bracket 1 and Cover- Stair
- Qty (1) Fixed Top Rail Bracket 2 and Cover- Stair
- Qty (1) Fixed Bottom Rail Bracket 1 and Cover - Stair
- Qty (1) Fixed Bottom Rail Bracket 2 and Cover - Stair
- Qty (1) Fastener Pack
(Screws for attachment to AL Posts & Screws for attachment to Composite Post)



Trex Part #: xxFHBKTAL

Description: Fixed Bracket (4-Pack) – Horizontal (aka Cut Kit)

UOM: Bag of 1

Purpose: Supplementary brackets for cut rail sections.



Bill of Materials

Qty (2) Fixed Top Rail Bracket and Cover - Horizontal

Qty (2) Fixed Bottom Rail Bracket and Cover - Horizontal

Qty (1) Fastener Pack

(Screws for attachment to AL Posts & Screws for attachment to Composite Post)



Trex Part #: xxFSBK TAL

Description: Fixed Bracket (4-Pack) – Stair (aka Cut Kit)

UOM: Bag of 1

Purpose: Supplementary brackets for cut rail sections.
* 32-37 degree installations



Bill of Materials

Qty (1) Fixed Top Rail Bracket 1 and Cover- Stair

Qty (1) Fixed Top Rail Bracket 2 and Cover- Stair

Qty (1) Fixed Bottom Rail Bracket 1 and Cover - Stair

Qty (1) Fixed Bottom Rail Bracket 2 and Cover - Stair

Qty (1) Fastener Pack

(Screws for attachment to AL Posts & Screws for attachment to Composite Post)



Trex Part #: xxSWSCBKTAL

Description: Swivel Crossover Bracket Kit – Stair

UOM: Bag of 1

Purpose: To be used in combination with 2x2x53” Cut-to-Length Post (xxAL020253AP) for Crossover Stair applications.



Bill of Materials

Qty (1) Swivel Crossover Bracket – Stair

Qty (2) Post to Bracket Fasteners



Trex Part #: xxSWHBKTAL

Description: Swivel Bracket– Horizontal

UOM: Bag of 1

Purpose: For angled horizontal applications, used in place of fixed horizontal brackets.



Bill of Materials

- Qty (1) Swivel Top Rail Bracket and Cover – Horizontal
- Qty (1) Swivel Bottom Rail Bracket and Cover – Horizontal
- Qty (2) Fastener Covers
- Qty (1) Fastener Pack
(Screws for attachment to AL Posts & Rails)



Trex Part #: xxSWSBKAL

Description: Swivel Bracket– Stair

UOM: Bag of 1

Purpose: An alternative option for stair installations, used in place of fixed stair brackets.
* 32-37 degree installations



Bill of Materials

- Qty (1) Swivel Top Rail Bracket and Cover – Stair
- Qty (1) Swivel Bottom Rail Bracket and Cover – Stair
- Qty (2) Fastener Covers
- Qty (1) Fastener Pack
(Screws for attachment to AL Posts & Rails)



Trex Part #: xxCPDSWBKTAL

Description: Compound Swivel Bracket - Stair

UOM: Bag of 1

Purpose: For flared stair installations, used in place of fixed stair brackets.



Bill of Materials

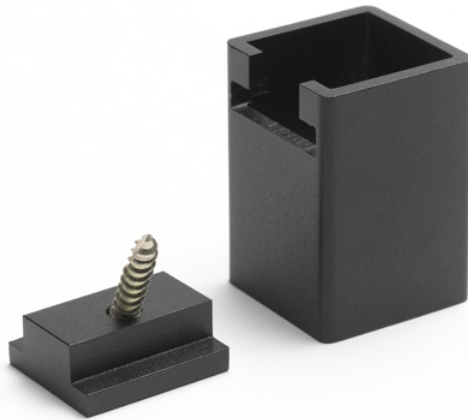
- Qty (1) Compound Swivel Top Rail Bracket and Cover – Stair
- Qty (1) Compound Swivel Bottom Rail Bracket and Cover – Stair
- Qty (2) Fastener Covers
- Qty (1) Fastener Pack
(Screws for attachment to AL Posts & Rails)



Trex Part #: xxALFTBLK

Description: Aluminum Footblock

UOM: Bag of 1



Bill of Materials

Qty (1) Footblock

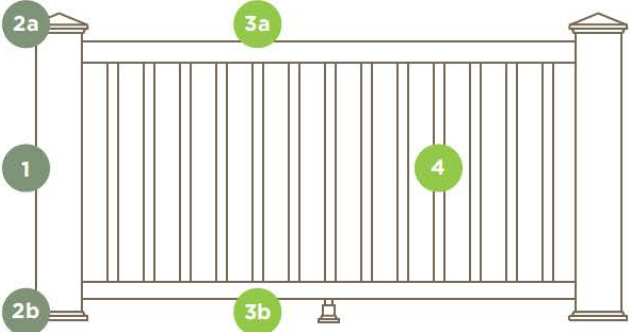
Qty (1) Footblock Anchor and fastener



BEST

High design, myriad options

For those projects that demand the very best, Transcend® railing offers the widest assortment of customizable components with the most color options—seven in all.



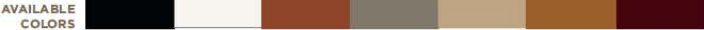
Here's how:
 Transcend is a 5-step process. Choose Trex® post sleeves, caps and skirts (steps 1 & 2). Then choose rails and balusters for a custom design (steps 3-5).

Transcend also offers a simple, 3-step option if you choose a rail & baluster kit in Classic White.

5 ACCESSORY INFILL KIT
 (Foot blocks, baluster spacers and hardware to match your rail color)

Transcend Component Options

3a	TOP RAILS	3b	BOTTOM RAILS	4	BALUSTERS
	<p>Crown</p> <p>Beveled</p> <p>Universal (with 2x4 to create a cocktail rail)</p>		<p>Beveled</p> <p>Universal</p>		<p>Square</p> <p>Colonial</p> <p>Round Aluminum</p>
					Glass panel kits also available (glass sold separately)



Trex Transcend® Railing

- Transcend is either a 5-step or 3-step process. Choose Trex® post sleeves, caps and skirts (steps 1 & 2). Then choose each component separately for a custom design (5-step).

STEP	COMPONENT	DESCRIPTION	ITEM NUMBER
3a	Top & Bottom Rails In this step, two rails (1 top, 1 bottom) must be selected.	6" Crown Top Rail	XXCROWNTR06
		8" Crown Top Rail	XXCROWNTR08
3b	 Crown Universal Beveled	6" Universal Top/Bottom Rail	XXUNIVTR06
		8" Universal Top/Bottom Rail	XXUNIVTR08
		6" Beveled Top/Bottom Rail	XXBEVELTR06
		[6" Rail: 67.5" (1715 mm) actual length; 8" Rail: 91.5" (2324 mm) actual length]	
4	Balusters/Spindles See chart below for number of balusters needed to complete each railing section.	Square Balusters for 36" Rail Height (16/pack) <i>[1.418" x 1.418" x 30.375" (36 mm x 36 mm x 772 mm) actual dimensions]</i>	XX020230SBK
		Square Balusters for 42" Rail Height (16/pack) <i>[1.418" x 1.418" x 36.375" (36 mm x 36 mm x 924 mm) actual dimensions]</i>	XX020236SBK
		Colonial Spindles for 36" Rail Height (16/pack) <i>[1.418" x 1.418" x 30.375" (36 mm x 36 mm x 772 mm) actual dimensions]</i>	WT020230CSP
		Colonial Spindles for 42" Rail Height (16/pack) <i>[1.418" x 1.418" x 36.375" (36 mm x 36 mm x 924 mm) actual dimensions]</i>	WT020236CSP
		Round Aluminum Balusters for 36" Rail Height (20/pack) <i>[.75" x 30.25" (19 mm x 768 mm) actual dimensions]</i>	XXTA30RBK
		Round Aluminum Balusters For 42" Rail Height (20/pack) <i>[.75" x 36.25" (19 mm x 921 mm) actual dimensions]</i>	XXTA36RBK
		Square Aluminum Balusters for 36" Rail Height (20/pack) <i>[.75" x 30.25" (19 mm x 768 mm) actual dimensions]</i>	XXTA30SBK <i>Available early 2014</i>
		Square Aluminum Balusters for 42" Rail Height (20/pack) <i>[.75" x 36.25" (19 mm x 921 mm) actual dimensions]</i>	XXTA36SBK <i>Available early 2014</i>
5	Accessory Infill Kit » 2 Baluster Spacers » Adjustable Foot Block » Mounting Hardware	6" Accessory Infill Kit for Square/Colonial Balusters—Horizontal	XXSQHK06
		6" Accessory Infill Kit for Square/Colonial Balusters—Stair	XXSQSK06
		8" Accessory Infill Kit for Square/Colonial Balusters—Horizontal	XXSQHK08
		8" Accessory Infill Kit for Square/Colonial Balusters—Stair	XXSQSK08
		6" Accessory Infill Kit for Round Aluminum Balusters—Horizontal	XXRDHK06
		6" Accessory Infill Kit for Round Aluminum Balusters—Stair	XXRDSK06
		8" Accessory Infill Kit for Round Aluminum Balusters—Horizontal	XXRDHK08
		8" Accessory Infill Kit for Round Aluminum Balusters—Stair	XXRDSK08
		6" Accessory Infill Kit for Square Aluminum Balusters—Horizontal	Available early 2014
		6" Accessory Infill Kit for Square Aluminum Balusters—Stair	Available early 2014
		8" Accessory Infill Kit for Square Aluminum Balusters—Horizontal	Available early 2014
		8" Accessory Infill Kit for Square Aluminum Balusters—Stair	Available early 2014
		6" Glass Panel Accessory Kit <i>[Glass panel mounting hardware: glass panel not included]</i>	XXGLIK06
ACCESSORY	Transcend Accessories All accessories include a quantity of 12 per box unless otherwise noted.	Mounting Hardware for Cut Rails—Horizontal	XXHZACCYKIT
		Mounting Hardware for Cut Rails—Stair	XXSTACCYKIT
		Transcend RSB Bracket Pack—Horizontal (24/box)	TSHBRACKET
		Transcend RSB Bracket Pack—Stair (24/box)	TSSBRACKET
		0 Degree Rail Gasket Pack—Horizontal	XX00HGASK
		0 Degree Rail Gasket Pack—Stair	XX00SGASK
		22.5 Degree Gasket Pack <i>(for Crown/Universal/Bevel)</i>	XX22HGASK
		45 Degree Birdsmouth Gasket Pack <i>(for 4 x 4 Crown/Universal)</i>	XX45RSBADAPK
		45 Degree Gasket Pack <i>(for 4 x 4 or 6 x 6 Bevel)</i>	XX45BEVGASK
		45 Degree Gasket Pack <i>(for 6 x 6 Crown/Universal)</i>	WT45HGASK
3	Rail & Baluster Kit » Crown Top Rail » Universal Bottom Rail » Square Balusters » Baluster Spacers » Adjustable Foot Block » Mounting Hardware	6" x 36" Rail & Baluster Kit—Horizontal	WT0636HRK
		6" x 36" Rail & Baluster Kit—Stair	WT0636SRK
		8" x 36" Rail & Baluster Kit—Horizontal	WT0836HRK
		8" x 36" Rail & Baluster Kit—Stair	WT0836SRK
		[6" Rail: 67.5" (1715 mm) actual length; 8" Rail: 91.5" (2324 mm) actual length]	
		Available in Classic White only.	
XX = COLOR PREFIX:		WT Classic White	FP Fire Pit
		BK Charcoal Black	GP Gravel Path
		RS Rope Swing	VL Vintage Lantern
		TH Tree House	BZ Bronze <i>(aluminum only)</i>

Trex Transcend®

RAILING

Trex Part #: xxSQHIK06 / xxSQHIK08

Description: Accessory Infill Kit for 1.4" Square Balusters (6ft & 8ft) - Horizontal

Purpose: Component hardware to construct 1.4" Square baluster infill design- Horizontal



Bill of Materials

Qty (2) 67.5" or 91.5" Baluster Spacers for 1.4" Square Balusters - Horizontal

Qty (1) Adjustable Footblock

Qty (2) Crown Top Rail Gaskets- Horizontal

Qty (4) Universal Top/Bottom Rail Gaskets- Horizontal

Qty (2) Beveled Top Rail Gaskets- Horizontal

Qty (2) Beveled Bottom Rail Gaskets- Horizontal

Qty (4) RSB Rail Brackets

Qty (8) Rail to Bracket Fasteners- Horizontal

Qty (8) Rail to Post Fasteners

Qty (4) Screw Tip Covers

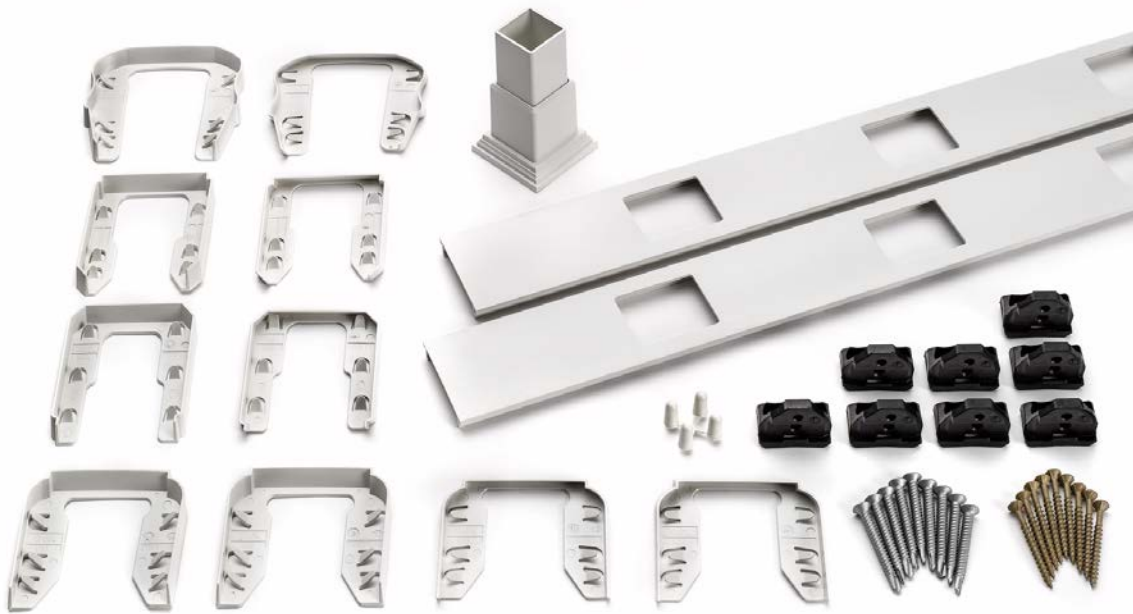
Trex Transcend®

RAILING

Trex Part #: xxSQSIK06 / xxSQSIK08

Description: Accessory Infill Kit for 1.4" Square Balusters (6ft & 8ft) - Stair

Purpose: Component hardware to construct 1.4" Square baluster infill design- Stair



Bill of Materials

Qty (2) 67.5" or 91.5" Baluster Spacers for 1.4" Square Balusters - Stair

Qty (1) Adjustable Footblock

Qty (1) Crown Top 1 Rail Gaskets- Stair

Qty (1) Crown Top 2 Rail Gaskets- Stair

Qty (2) Universal Top/Bottom 1 Rail Gaskets- Stair

Qty (2) Universal Top/Bottom 2 Rail Gaskets- Stair

Qty (1) Beveled Top Rail 1 Gaskets- Stair

Qty (1) Beveled Top Rail 2 Gaskets- Stair

Qty (1) Beveled Bottom Rail 1 Gaskets- Stair

Qty (1) Beveled Bottom Rail 2 Gaskets- Stair

Qty (8) RSB Rail Brackets

Qty (8) Rail to Bracket Fasteners - Stair

Qty (8) Rail to Post Fasteners

Qty (4) Screw Tip Covers

Trex Transcend®

RAILING

Trex Part #: xxRDHIK06 / xxRDHIK08

Description: Accessory Infill Kit for 3/4" Round AL Balusters (6ft & 8ft) - Horizontal

Purpose: Component hardware for 3/4" Round Aluminum Balusters –Horizontal Install



Bill of Materials

Qty (2) 67.5" or 91.5" Baluster Spacers for 3/4" Round AL Balusters - Horizontal

Qty (1) Adjustable Footblock

Qty (2) Crown Top Rail Gaskets- Horizontal

Qty (4) Universal Top/Bottom Rail Gaskets- Horizontal

Qty (2) Beveled Top Rail Gaskets- Horizontal

Qty (2) Beveled Bottom Rail Gaskets- Horizontal

Qty (4) RSB Rail Brackets

Qty (8) Rail to Bracket Fasteners- Horizontal

Qty (8) Rail to Post Fasteners

Qty (2) 64.75" or 88.75" Aluminum Baluster Adapter Strips

Qty (4) Screw Tip Covers

Trex Transcend®

RAILING

Trex Part #: xxRDSIK06 / xxRDSIK08

Description: Accessory Infill Kit for 3/4" Round AL Balusters (6ft & 8ft) - Stair

Purpose: Component hardware for 3/4" Round Aluminum Balusters –Stair Install



Bill of Materials

- Qty (2) 67.5" or 91.5" Baluster Spacers for 3/4" Round AL Balusters - Stair
- Qty (1) Adjustable Footblock
- Qty (1) Crown Top 1 Rail Gaskets- Stair
- Qty (1) Crown Top 2 Rail Gaskets- Stair
- Qty (2) Universal Top/Bottom 1 Rail Gaskets- Stair
- Qty (2) Universal Top/Bottom 2 Rail Gaskets- Stair
- Qty (1) Beveled Top Rail 1 Gaskets- Stair
- Qty (1) Beveled Top Rail 2 Gaskets- Stair
- Qty (1) Beveled Bottom Rail 1 Gaskets- Stair
- Qty (1) Beveled Bottom Rail 2 Gaskets- Stair
- Qty (8) RSB Rail Brackets
- Qty (8) Rail to Bracket Fasteners - Stair
- Qty (8) Rail to Post Fasteners
- Qty (2) 64.75" or 88.75" Aluminum Baluster Adapter Strips
- Qty (4) Screw Tip Covers

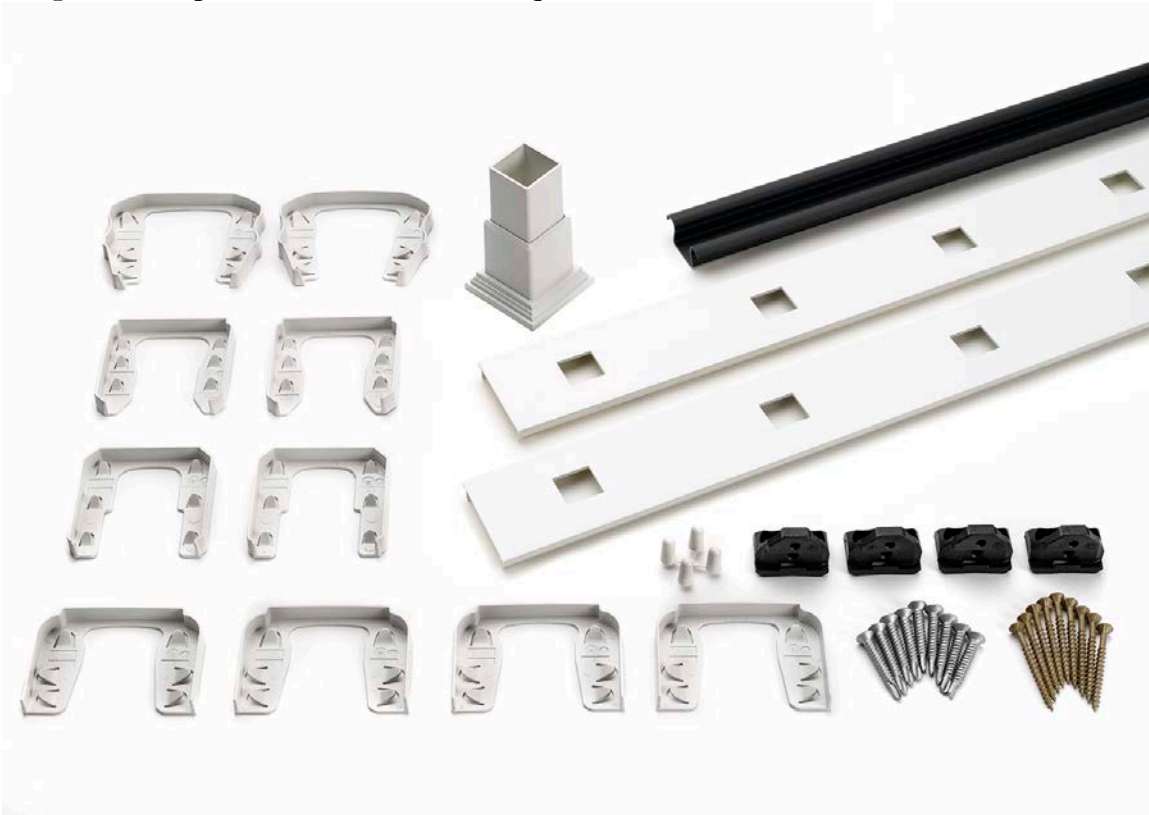
Trex Transcend®

RAILING

Trex Part #: xxASBHIK06 / xxASBHIK08

Description: Accessory Infill Kit for 3/4" Square AL Balusters (6ft & 8ft) - Horizontal

Purpose: Component hardware for 3/4" Square Aluminum Balusters –Horizontal Install



Bill of Materials

Qty (2) 67.5" or 91.5" Baluster Spacers for 3/4" Square AL Balusters - Horizontal

Qty (1) Adjustable Footblock

Qty (2) Crown Top Rail Gaskets- Horizontal

Qty (4) Universal Top/Bottom Rail Gaskets- Horizontal

Qty (2) Beveled Top Rail Gaskets- Horizontal

Qty (2) Beveled Bottom Rail Gaskets- Horizontal

Qty (4) RSB Rail Brackets

Qty (8) Rail to Bracket Fasteners- Horizontal

Qty (8) Rail to Post Fasteners

Qty (2) 64.75" or 88.75" Aluminum Baluster Adapter Strips

Qty (4) Screw Tip Covers

Trex Transcend®

RAILING

Trex Part #: xxASBSIK06 / xxASBSIK08

Description: Accessory Infill Kit for 3/4" Square AL Balusters (6ft & 8ft) - Stair

Purpose: Component hardware for 3/4" Square Aluminum Balusters –Stair Install



Bill of Materials

Qty (2) 67.5" or 91.5" Baluster Spacers for 3/4" Square AL Balusters - Stair

Qty (1) Adjustable Footblock

Qty (1) Crown Top 1 Rail Gaskets- Stair

Qty (1) Crown Top 2 Rail Gaskets- Stair

Qty (2) Universal Top/Bottom 1 Rail Gaskets- Stair

Qty (2) Universal Top/Bottom 2 Rail Gaskets- Stair

Qty (1) Beveled Top Rail 1 Gaskets- Stair

Qty (1) Beveled Top Rail 2 Gaskets- Stair

Qty (1) Beveled Bottom Rail 1 Gaskets- Stair

Qty (1) Beveled Bottom Rail 2 Gaskets- Stair

Qty (8) RSB Rail Brackets

Qty (8) Rail to Bracket Fasteners - Stair

Qty (8) Rail to Post Fasteners

Qty (2) 64.75" or 88.75" Aluminum Baluster Adapter Strips

Qty (4) Screw Tip Cover

Trex Transcend®

RAILING

Trex Part #: xxGLIK06

Description: Accessory Infill Kit for Glass Panel– Horizontal ONLY
(Glass Sold Separately)

Purpose: Component hardware to construct Glass Panel infill design- Horizontal



Bill of Materials

- Qty (4) 67.5" Panel Support Moldings for Glass Panel
- Qty (2) Glass edge trim gasket
- Qty (1) 8.5" Baluster Strip Trim
- Qty (1) Adjustable Footblock
- Qty (2) Crown Top Rail Gaskets- Horizontal
- Qty (4) Universal Top/Bottom Rail Gaskets- Horizontal
- Qty (2) Beveled Top Rail Gaskets- Horizontal
- Qty (2) Beveled Bottom Rail Gaskets- Horizontal
- Qty (4) RSB Rail Brackets
- Qty (8) Rail to Bracket Fasteners - Horizontal
- Qty (8) Rail to Post Fasteners
- Qty (4) Screw Tip Covers

Trex Transcend®

RAILING

Trex Part #: xxHZACCYKIT

Description: Mounting Hardware for Cut Rails - Horizontal (aka Cut Kit)

UOM: Bag of 1

Purpose: Supplementary brackets for cut rail sections



Bill of Materials

- Qty (2) Crown Top Rail Gaskets- Horizontal
- Qty (4) Universal Top/Bottom Rail Gaskets- Horizontal
- Qty (2) Beveled Top Rail Gaskets- Horizontal
- Qty (2) Beveled Bottom Rail Gaskets- Horizontal
- Qty (4) RSB Rail Brackets
- Qty (8) Rail to Bracket Fasteners- Horizontal
- Qty (8) Rail to Post Fasteners
- Qty (4) Screw Tip Covers

Trex Transcend®

RAILING

Trex Part #: xxSTACCYKIT

Description: Mounting Hardware for Cut Rails - Stair (aka Cut Kit)

UOM: Bag of 1

Purpose: Supplementary brackets for cut rail sections



Bill of Materials

- Qty (1) Crown Top 1 Rail Gaskets- Stair
- Qty (1) Crown Top 2 Rail Gaskets- Stair
- Qty (2) Universal Top/Bottom 1 Rail Gaskets- Stair
- Qty (2) Universal Top/Bottom 2 Rail Gaskets- Stair
- Qty (1) Beveled Top Rail 1 Gaskets- Stair
- Qty (1) Beveled Top Rail 2 Gaskets- Stair
- Qty (1) Beveled Bottom Rail 1 Gaskets- Stair
- Qty (1) Beveled Bottom Rail 2 Gaskets- Stair
- Qty (8) RSB Rail Brackets
- Qty (8) Rail to Bracket Fasteners - Stair
- Qty (8) Rail to Post Fasteners
- Qty (4) Screw Tip Covers

Trex Transcend®

RAILING

Trex Part #: TSHBRACKET

Description: RSB Bracket Pack - Horizontal

UOM: Bag of 1

Purpose: Supplementary brackets and fasteners



Bill of Materials

Qty (4) RSB Rail Brackets

Qty (8) Rail to Bracket Fasteners- Horizontal

Qty (8) Rail to Post Fasteners

Trex Transcend®

RAILING

Trex Part #: TSSBRACKET

Description: RSB Bracket Pack – Stair

UOM: Bag of 1

Purpose: Supplementary brackets and fasteners



Bill of Materials

Qty (8) RSB Rail Brackets

Qty (8) Rail to Bracket Fasteners - Stair

Qty (8) Rail to Post Fasteners

Trex Transcend®

RAILING

Trex Part #: xx00HGASK

Description: 0 Degree Rail Gasket Pack – Horizontal

UOM: Bag of 1

Purpose: Replacement Gaskets for 0 degree – Horizontal installations
(Gaskets to equip one full section in any rail configuration)

Rail Profile: Crown Top Rail, **Universal** Top/Bottom Rail, **Beveled** Top/Bottom Rail



Bill of Materials

Qty (2) Crown Top Rail Gaskets- Horizontal

Qty (4) Universal Top/Bottom Rail Gaskets- Horizontal

Qty (2) Beveled Top Rail Gaskets- Horizontal

Qty (2) Beveled Bottom Rail Gaskets- Horizontal

Trex Transcend®

RAILING

Trex Part #: xx00SGASK

Description: 0 Degree Rail Gasket Pack - Stair

UOM: Bag of 1

Purpose: Replacement Gaskets for 0 degree – Stair installations
(Gaskets to equip one full section in any rail configuration)

Rail Profile: Crown Top Rail, **Universal** Top/Bottom Rail, **Beveled** Top/Bottom Rail



Bill of Materials

- Qty (1) Crown Top 1 Rail Gaskets- Stair
- Qty (1) Crown Top 2 Rail Gaskets- Stair
- Qty (2) Universal Top/Bottom 1 Rail Gaskets- Stair
- Qty (2) Universal Top/Bottom 2 Rail Gaskets- Stair
- Qty (1) Beveled Top Rail 1 Gaskets- Stair
- Qty (1) Beveled Top Rail 2 Gaskets- Stair
- Qty (1) Beveled Bottom Rail 1 Gaskets- Stair
- Qty (1) Beveled Bottom Rail 2 Gaskets- Stair

Trex Transcend®

RAILING

Trex Part #: xx22HGASK

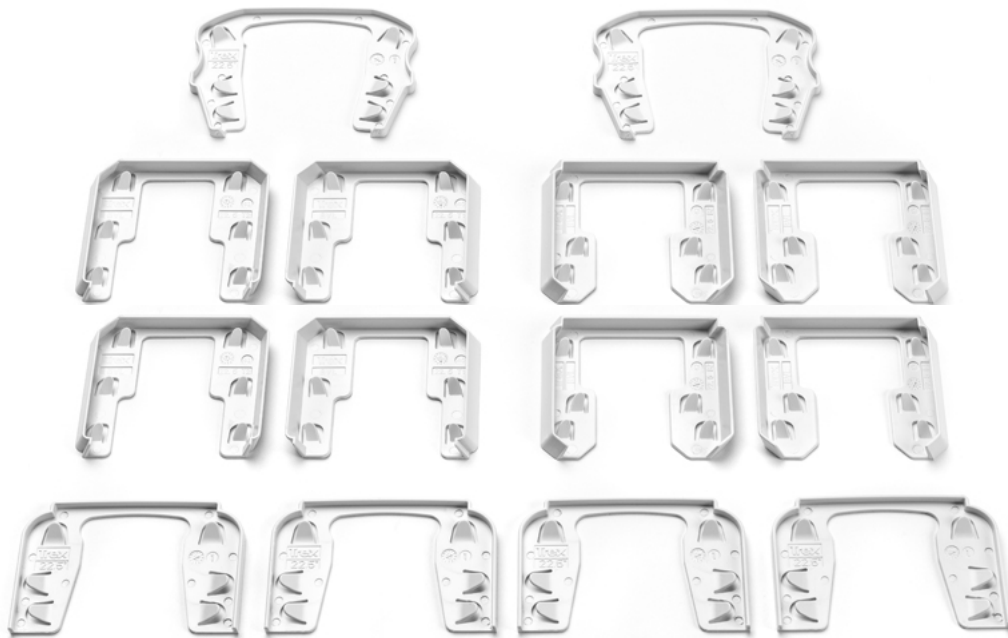
Description: 22.5 Degree Rail Gasket Pack - Horizontal

UOM: Bag of 1

Purpose: Gaskets for 22.5 degree – Horizontal installations
(Gaskets to equip one full section in any rail configuration)

Rail Profile: Crown Top Rail, Universal Top/Bottom Rail, Beveled Top/Bottom Rail

Post Size: 4x4 or 6x6



Bill of Materials

- Qty (2) Crown Top Rail Gaskets- 22.5
- Qty (4) Universal Top/Bottom 1 Rail Gaskets- 22.5
- Qty (2) Beveled Top Rail 1 Gaskets- 22.5
- Qty (2) Beveled Top Rail 2 Gaskets- 22.5
- Qty (2) Beveled Bottom Rail 1 Gaskets- 22.5
- Qty (2) Beveled Bottom Rail 2 Gaskets- 22.5

Trex Transcend®

RAILING

Trex Part #: xx45RSBADAPK

Description: 45 Degree “Birds-Mouth” Rail Gasket Pack – Horizontal

UOM: Bag of 1

Purpose: Gaskets for 45 degree – Horizontal installations

Rail Profile: Crown Top Rail & Universal Top/Bottom Rail

Post Size: 4x4 or 6x6



Bill of Materials

Qty (4) 45degree Adapters for RSB Rail Brackets

Qty (2) Crown Top Rail Birds-mouth Gaskets- 45

Qty (4) Universal Top/Bottom Rail Birds-mouth Gaskets- 45

Trex Transcend®

RAILING

Trex Part #: WT45HGASK

Description: 45 Degree Rail Gasket Pack - Horizontal

UOM: Bag of 1

Purpose: Gaskets for 45 degree – Horizontal installations

Rail Profile: Crown Top Rail & Universal Top/Bottom Rail

Post Size: 6x6 ONLY



Bill of Materials

Qty (2) Crown Top Rail Gaskets- 45

Qty (4) Universal Top/Bottom Rail Gaskets- 45

Trex Transcend®

RAILING

Trex Part #: xx45BEVGASK

Description: 45 Degree Rail Gasket Pack – Horizontal

UOM: Bag of 1

Purpose: Gaskets for 45 degree – Horizontal installations

Rail Profile: Beveled Top / Bottom Rail

Post Size: 4x4 or 6x6



Bill of Materials

Qty (2) Beveled Top Rail 1 Gaskets- 45

Qty (2) Beveled Top Rail 2 Gaskets- 45

Qty (2) Beveled Bottom Rail 1 Gaskets- 45

Qty (2) Beveled Bottom Rail 2 Gaskets- 45

Trex Transcend®

RAILING

Trex Part #: xxFTBLK

Description: Adjustable Footblock

UOM: Box of 50



Bill of Materials

Qty (1) Adjustable Footblock

Qty (1) Base and Base Fastener

Qty (1) Locking Fastener and Screw Cap

Trex® Outdoor Lighting™



Meet the light of the party

High performance

- » Energy-efficient Cree® LEDs give off long-lasting illumination*
- » Dimmable glow matches the mood of any outdoor party or dinner
- » Remains weather-proof and salt air resistant in the toughest climates
- » Offers total lighting control via timer and optional dimmer with remote

Perennial beauty

- » Sophisticated fixtures create custom lighting effects and designs
- » Ambient light improves the safety of paths and stairways
- » Out of sight during the day, beautiful light every night
- » Available in a variety of colors to complement any outdoor space

Trex® through and through

- » Part of a complete Trex package
- » Trex LightHub™ connection system makes set-up a snap for DIYers
- » Lighting builds into new decks and landscaping or retrofits into existing spaces
- » Earth-friendly LEDs are up to 9.1 times more efficient than incandescent lighting
- » Protected under warranty for years of outdoor use**

LIGHTING & DESCRIPTION	ITEM NUMBER
------------------------	-------------

LANDSCAPE LIGHTING

- Rounded Path Light
- Stepped Path Light
- Well Light
- Multifunction Light
- Spotlight*



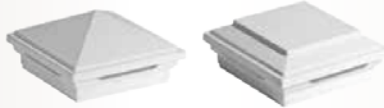
- BKRDPATH2PK, BZRDPATH2PK
- BKSPATH2PK, BZSPATH2PK
- BKWELL, BZWELL
- BKMULTI, BZMULTI
- BKSPOT, BZSPOT

*Includes: 36v Step-up Transformer & Female to Female Adapter

DECK LIGHTING

Pyramid or Flat Post Cap Light

- » 4" x 4" LED Post Cap Light
[4.55" x 4.55" (114 mm x 114 mm)
internal dimensions]
- » 5/6" Male LightHub™ Lead



- | | |
|---------------------|------------------|
| PYRAMID CAPS | FLAT CAPS |
| BKPYLEDCAP4X4C | BKSQLEDCAP4X4C |
| WTPYLEDCAP4X4C | WTSQLEDCAP4X4C |
| FPPYLEDCAP4X4C | FPSQLEDCAP4X4C |
| THPYLEDCAP4X4C | THSQLEDCAP4X4C |
| VLPYLEDCAP4X4C | VLSQLEDCAP4X4C |
| GPPYLEDCAP4X4C | GPSQLEDCAP4X4C |
| RSPYLEDCAP4X4C | RSSQLEDCAP4X4C |

Deck Rail Light

- » LED Deck Rail Light
[2.75" (70 mm) OD]
- » 5/6" Male LightHub Lead



- TEXTURED CHARCOAL BLACK: BKLAMPLEDC
- TEXTURED BRONZE: BZLAMPLEDC
- TEXTURED CLASSIC WHITE: WTLAMPLEDC

LED Riser 4 Pack

- » 4 LED Riser Lights
[1.25" (32 mm) OD]
- » 5/6" Male LightHub Lead



- TEXTURED CHARCOAL BLACK: BKRISERLED4PKC
- TEXTURED BRONZE: BZRISERLED4PKC
- TEXTURED CLASSIC WHITE: WTRISERLED4PKC

Recessed Deck Light 4 Pack

- » 4 LED Recessed Lights
[1" (25 mm) OD]
- » 5/6" Male LightHub Lead



- RECESSLED4PKC

ACCESSORIES

Transformer with Timer

- » Output Voltage: 12VDC
- » Output Power: 60W or 30W
- » Output Current: 5A or 2.5A
- » Photo-Activated Timer
- » 20 ft. LightHub Wire Extension Cable



- 5A, 60W: DLTRANSFORMER
- 2.5A, 30W: 25DLTRANSFORMER

5-Way Transformer Splitter



- DL5TFSPPLIT1PK

Dimmer

- » Single Channel with Remote



- DLDIMMER

1" (25 mm) Forstner Bit — Pack of 6



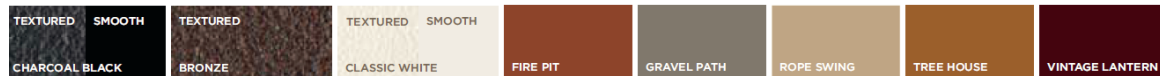
- DLBIT6PK

LightHub Accessories

- » 6-Way Splitter
- » 5 ft. Wire Extension Cable
- » 10 ft. Wire Extension Cable
- » 20 ft. Wire Extension Cable
- » 40 ft. Wire Extension Cable
- » 60 ft. Wire Extension Cable
- » Female to Female Adapter



- DL6SPLIT4PK
- DL5FTWR4PK
- DL10FTWR4PK
- DL20FTWR4PK
- DL40FTWR2PK
- DL60FTWR1PK
- DLFADAP6PK



Trex® Outdoor Lighting™

TRANSFORMER CAPACITY BY TYPE

Type of Light	5A Transformer (DL TRANSFORMER)	2.5A Transformer (2.5 DL TRANSFORMER)
Riser	180	90
Recessed	180	90
Post Cap	55	22
Deck Rail	180	90

Above listing is for maximum number of each individual types of lights. If mixing and matching lighting, contact Trex to determine if more than on transformer is required.

TRANSFORMER CAPACITY BY TYPE

Type of Light	5A Transformer (DL TRANSFORMER)	2.5A Transformer (2.5 DL TRANSFORMER)
Well Light	46	23
Path Light	31	16
Wall Wash Light	31	16

Above listing is for maximum number of each individual types of lights. If mixing and matching lighting, contact Trex to determine if more than on transformer is required.

TRANSFORMER CAPACITY BY TYPE

Type of Light	5A Transformer (DL TRANSFORMER)
Spotlight	7

Above listing is for maximum number of each individual types of lights. If mixing and matching lighting, contact Trex to determine if more than on transformer is required.

Trex[®] Outdoor Lighting[™]

Trex Part #: xxSPOT

Description: LED Spotlight

Colors: (BK, BZ)

UOM: Box of (1)



Bill of Materials

Qty (1) Trex Spotlight (featuring Cree Super LED)

Qty (1) Lighthouse Male Wire

Qty (1) Female to Female Adapter

Qty (1) 12v to 36v Step-up Transformer

(note: you will need DL5TFSPPLIT1PK to install more than one Spotlight per Transformer)

Trex[®] Outdoor Lighting[™]

Trex Part #: xxMULTI

Description: LED Multifunction Light

Colors: (BK, BZ)

UOM: Box of (1)



Bill of Materials

Qty (1) Trex Multifunction Light

Qty (1) Lighthub Male Wire

Qty (1) Female to Female Adapter

Trex® Outdoor Lighting™

Trex Part #: xxWELL

Description: LED Well Light (with removable spike)

Colors: (BK, BZ)

UOM: Box of (1)



Bill of Materials

Qty (1) Trex Well Light

Qty (1) Lighthouse Male Wire

Qty (1) Female to Female Adapter

Trex® Outdoor Lighting™

Trex Part #: xxSPATH2PK

Description: LED Stepped Path Light (2-pack)

Colors: (BK, BZ)

UOM: Box of (2)



Bill of Materials

Qty (2) Stepped Path Lights

Qty (1) Lighthouse Male Wire

Qty (1) Female to Female Adapter

Trex® Outdoor Lighting™

Trex Part #: xxRDPATH2PK

Description: LED Round Path Light (2-pack)

Colors: (BK, BZ)

UOM: Box of (2)



Bill of Materials

Qty (2) Round Path Lights

Qty (1) Lighthub Male Wire

Qty (1) Female to Female Adapter

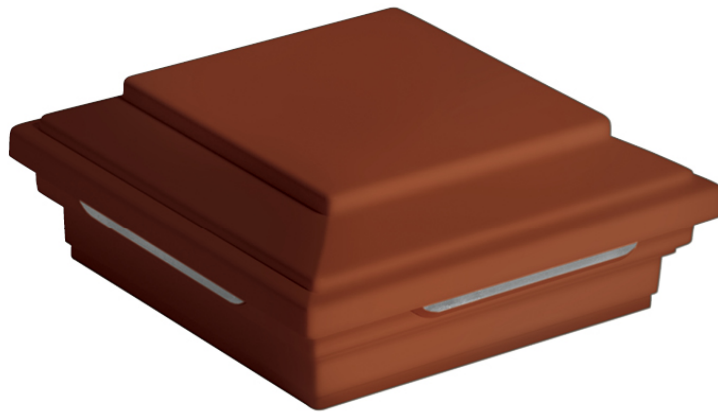
Trex® Outdoor Lighting™

Trex Part #: xxSQLEDCAP4X4C

Description: LED Flat Post Cap Light

Colors: (WT, BK, FP, VL, TH, RS, GP)

UOM: Box of 1



Bill of Materials

Qty (1) LED Cap Light w/6" Female Lighthub lead

Qty (1) Lighthub Male Wire (5')

Trex® Outdoor Lighting™

Trex Part #: xxPYLEDCAP4X4C

Description: LED Pyramid Post Cap Light

Colors: (WT, BK, FP, VL, TH, RS, GP)

UOM: Box of 1



Bill of Materials

Qty (1) LED Cap Light w/6" Female Lighthub lead

Qty (1) Lighthub Male Wire (5')

Trex® Outdoor Lighting™

Trex Part #: xxRISERLED4PKC

Description: LED Riser Light 4-pack

Colors: (BK, WT, BK)

UOM: Bag of (4)



Bill of Materials

Qty (4) LED Riser Lights w/6" Female Lighthub lead

Qty (1) Lighthub Male Wire (5')

Trex® Outdoor Lighting™

Trex Part #: xxLAMPLEDC

Description: LED Post Lamp

Colors: (BK, WT, BK)

UOM: Bag of (1)



Bill of Materials

Qty (1) LED Post Lamp w/6" Female Lighthub lead

Qty (1) Lighthub Male Wire (5')

Trex® Outdoor Lighting™

Trex Part #: xxRECESSLED4PK

Description: LED Recessed Light 4-pack

Colors: N/A

UOM: Bag of (4)



Bill of Materials

Qty (4) LED Recessed light w/6" Female Lighthub lead

Qty (1) Lighthub Male Wire (5')

Trex[®] Outdoor Lighting[™]

Trex Part #: DL5TFSPPLIT1PK

Description: 5-way Transformer Splitter

UOM: Box of (1)



Bill of Materials

Qty (1) 5-way splitter

Trex® Outdoor Lighting™

Trex Part #: DL6SPLIT4PK

Description: 6-way LightHub splitter

UOM: Bag of (4)



Bill of Materials

Qty (4) 6-way Lighthub Splitters

Trex® Outdoor Lighting™

Trex Part #: DLxxFTWRxPK

Description: Male/Male Lighthub extension wires

Lengths: 5', 10', 20', 40', 60'

UOM: *Various*



Bill of Materials

Various Qty Male Lighthub Extension Cables

Trex® Outdoor Lighting™

Trex Part #: DLFADAP6PK

Description: Female to Female Lighthub Adapter

UOM: Bag of (6)



Bill of Materials

Qty (6) Female to Female Lighthub Adapters

Trex[®] Outdoor Lighting[™]

Trex Part #: DLTRANSFORMER

Description: 60W 5a Trex Transformer

UOM: Box of (1)



Bill of Materials

Qty (1) 5a Trex Transformer

Qty (1) Trex Timer with Photocell

Qty (1) 20ft Lighthub Extension wire with Transformer Connection

Trex® Outdoor Lighting™

Trex Part #: 25DLTRANSFORMER

Description: 30W 2.5a Trex Transformer

UOM: Box of (1)



Bill of Materials

Qty (1) 2.5a Trex Transformer

Qty (1) Trex Timer with Photocell

Qty (1) 20ft Lighthouse Extension wire with Transformer Connection

Trex® Outdoor Lighting™

Trex Part #: DLDIMMER

Description: Trex water resistant dimmer with programmable remote

UOM: Box of (1)



Bill of Materials

Qty (1) Trex Dimmer

Qty (1) Trex Dimmer Remote

Resources



Want to give your railing designs a test run? Mix and match colors, pre-design configurations and check railing item numbers for easy ordering with our **TREX® COLOR VISUALIZER**, now updated with all our railing lines. Simply download for free from the App Store to get started.

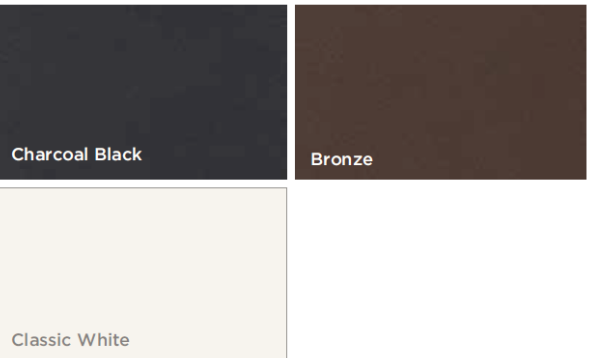


	BALUSTER TYPE	APPLICATION	PER 6" SECTION	PER 8" SECTION
TRANSCEND	Square & Colonial	Horizontal	13	18
	Square & Colonial	Stair	11	15
	Round Aluminum	Horizontal	15	20
	Round Aluminum	Stair	12	16
REVEAL	Square & Round	Horizontal	15	20
	Square & Round	Stair	12	17
SELECT	Square	Horizontal	13	18
	Square	Stair	11	15

TREX TRANSCEND® RAILING



TREX® REVEAL™ ALUMINUM RAILING



TREXSELECT® RAILING

